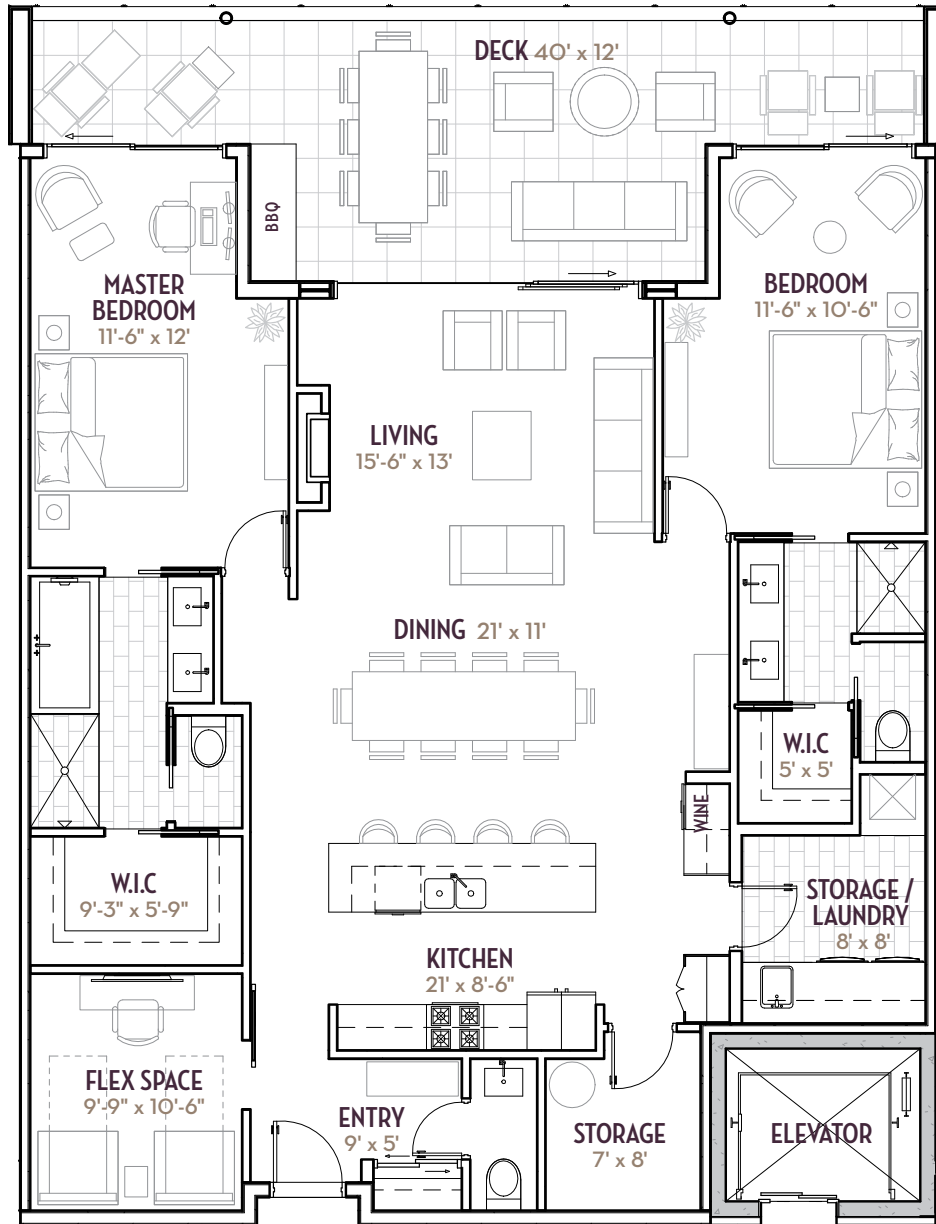




ARIVA PREMIUM ESTATE LIVING

SUITE A

2 bedroom *plus* flex space | 2.5 bath
2026 sq. ft. | 1673 sq. ft. *plus* 353 sq. ft. outdoor room

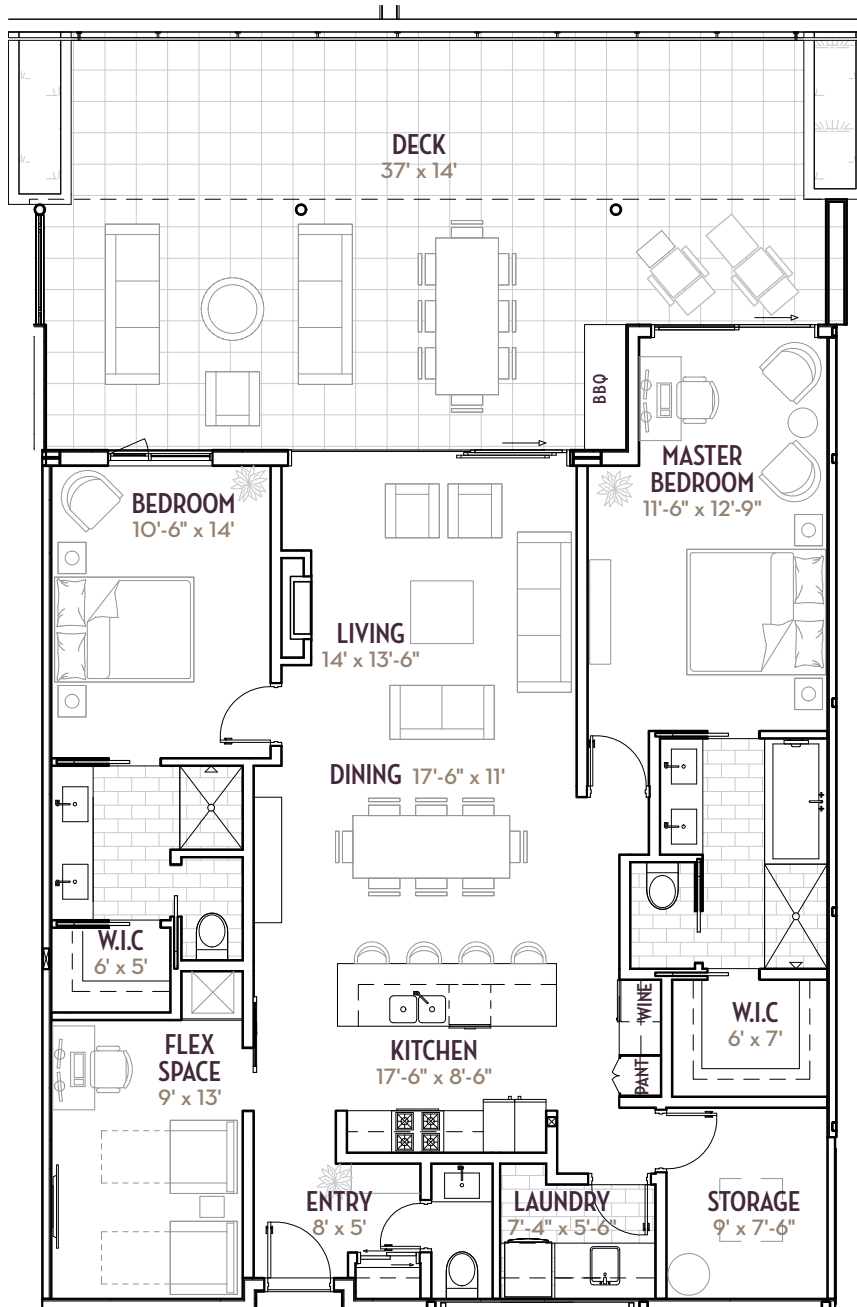




ARIVA PREMIUM ESTATE LIVING

SUITE A1 (WEST)

2 bedroom *plus* flex space | 2.5 bath
2000 sq. ft. | 1610 sq. ft. *plus* 390 sq. ft. outdoor room



A one-of-a-kind
Okanagan community
created by: **ARIVA
RESORTS**

Designed by **m+m a**
the award winning
architectural firm: **MEIKLEJOHN ARCHITECTS INC.**

Working Together,
Winning Together. **TEAM CONSTRUCTION**
MANAGEMENT LIMITED

ArivaKelowna.ca

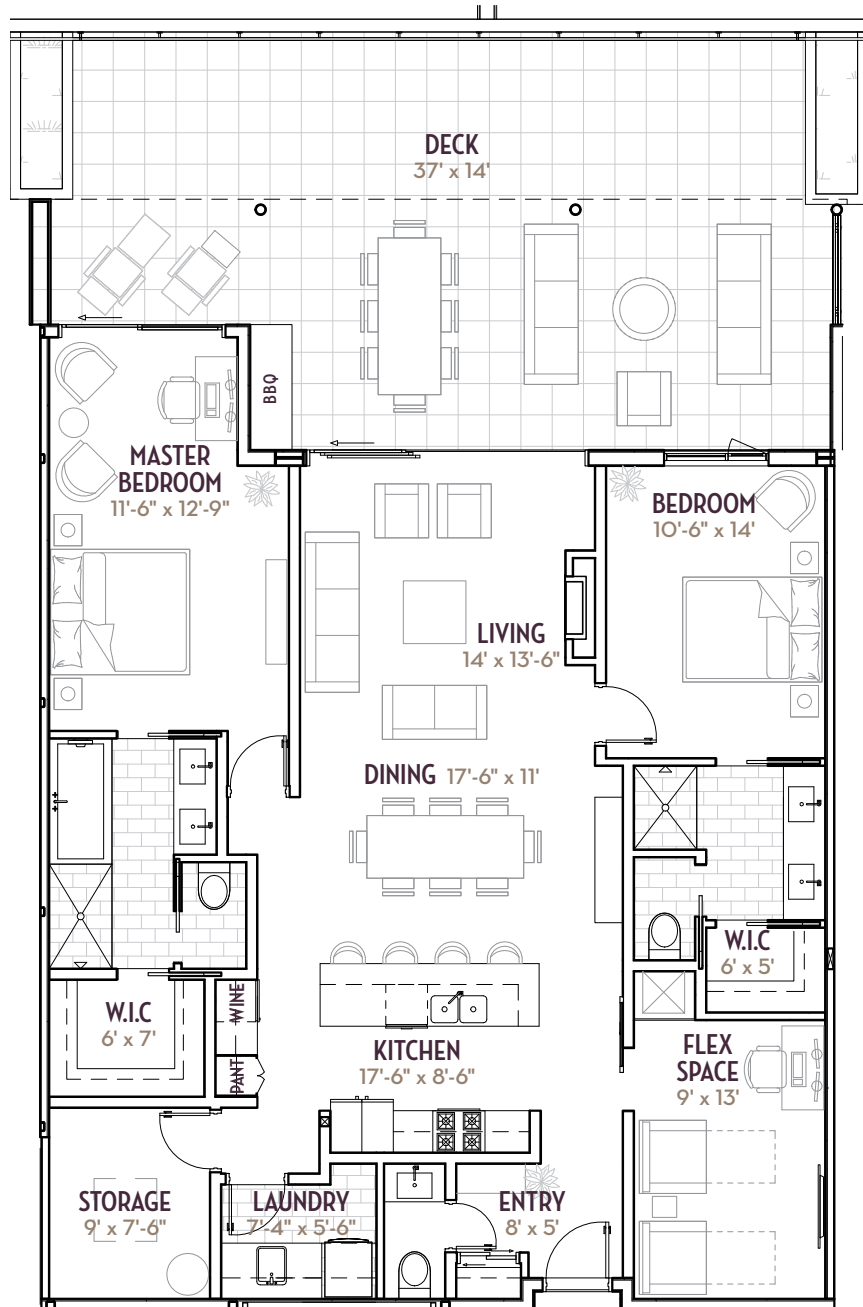
*Dimensions, layouts and specifications are approximates only and subject to change without notice.
All drawings and renderings are artist's conceptions only and for illustrative purposes only. E. & O.E.



ARIVA PREMIUM ESTATE LIVING

SUITE A1 (EAST)

2 bedroom *plus* flex space | 2.5 bath
2000 sq. ft. | 1610 sq. ft. *plus* 390 sq. ft. outdoor room



A one-of-a-kind
Okanagan community
created by: **ARIVA
RESORTS**

Designed by **m+m a**
the award winning
architectural firm: **MEIKLEJOHN ARCHITECTS INC.**

Working Together,
Winning Together.

TEAM CONSTRUCTION
MANAGEMENT LIMITED

ArivaKelowna.ca

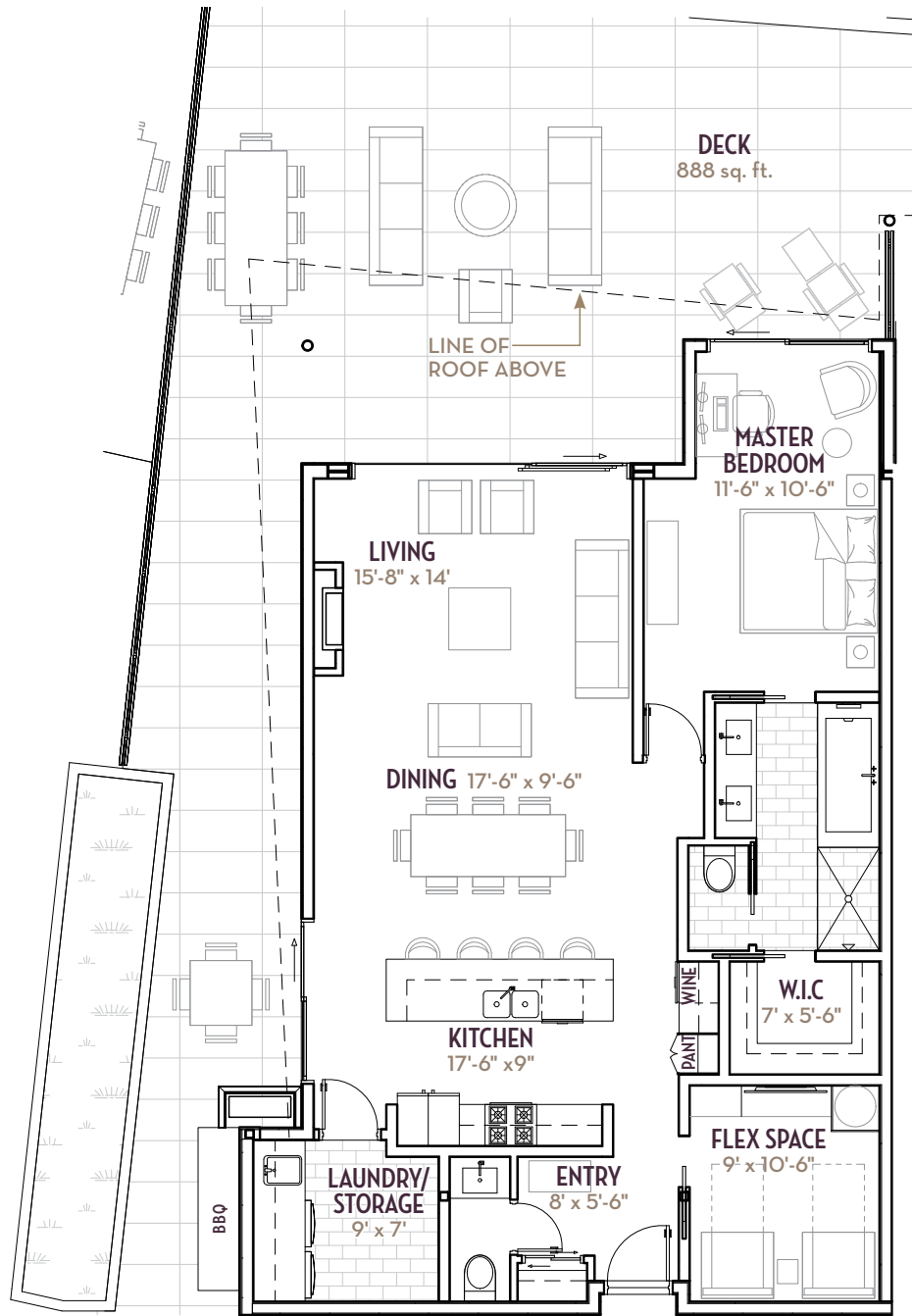
*Dimensions, layouts and specifications are approximates only and subject to change without notice.
All drawings and renderings are artist's conceptions only and for illustrative purposes only. E. & O.E.



ARIVA PREMIUM ESTATE LIVING

SUITE A2 (WEST)

1 bedroom *plus* den | 1.5 bath
1948 sq. ft. | 1246 sq. ft. *plus* 702 sq. ft. outdoor room



A one-of-a-kind
Okanagan community
created by: **ARIVA
RESORTS**

Designed by **m+m a**
the award winning
architectural firm: **MEIKLEJOHN ARCHITECTS INC.**

Working Together,
Winning Together.

TEAM CONSTRUCTION
MANAGEMENT LIMITED

ArivaKelowna.ca

*Dimensions, layouts and specifications are approximates only and subject to change without notice.
All drawings and renderings are artist's conceptions only and for illustrative purposes only. E. & O.E.

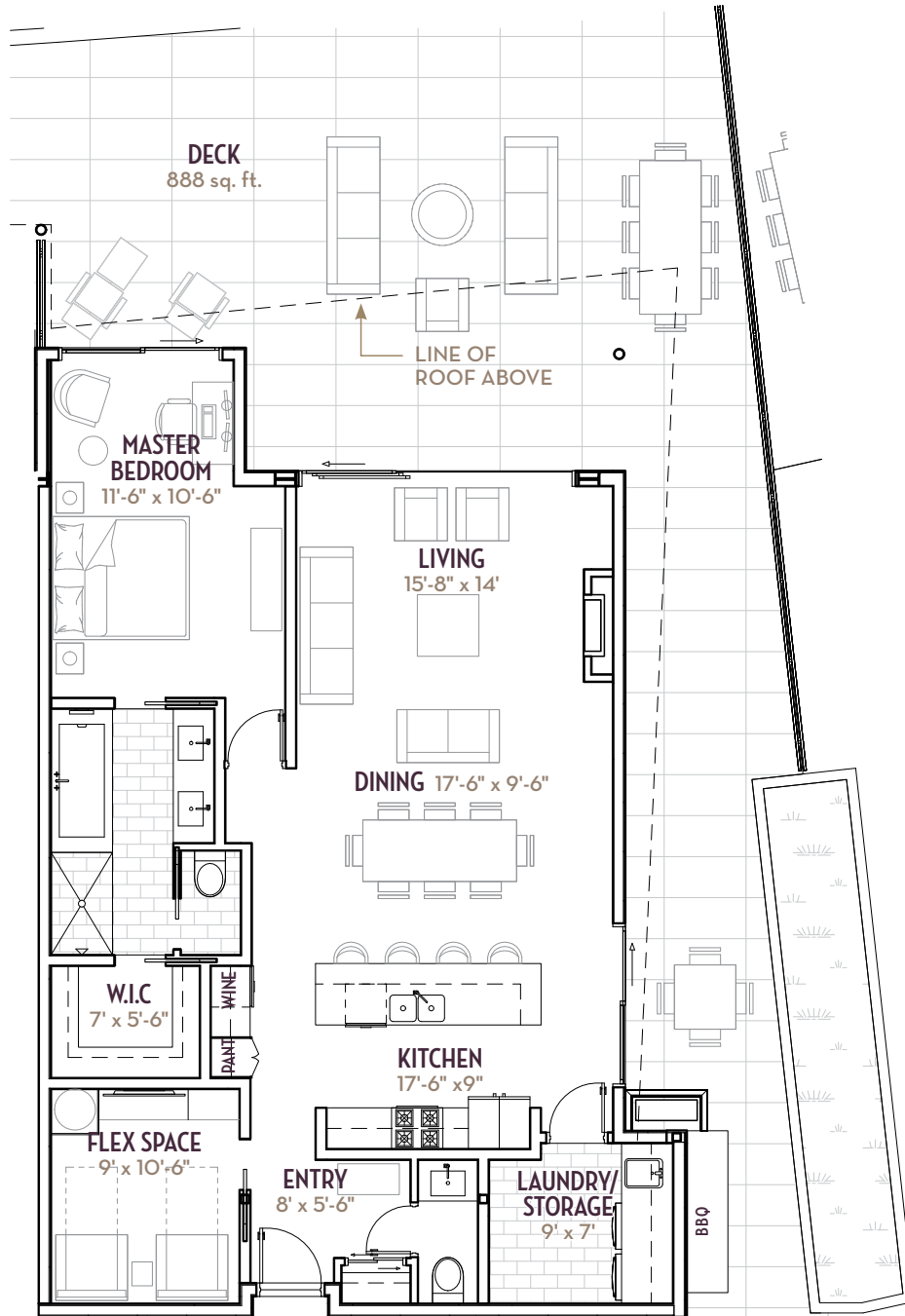


ARIVA PREMIUM ESTATE LIVING

SUITE A2 (EAST)

1 bedroom *plus* den | 1.5 bath

1948 sq. ft. | 1246 sq. ft. *plus* 702 sq. ft. outdoor room



A one-of-a-kind
Okanagan community
created by: **ARIVA
RESORTS**

Designed by **m+m a**
the award winning
architectural firm: **MEIKLEJOHN ARCHITECTS INC.**

Working Together,
Winning Together.

TEAM CONSTRUCTION
MANAGEMENT LIMITED

ArivaKelowna.ca

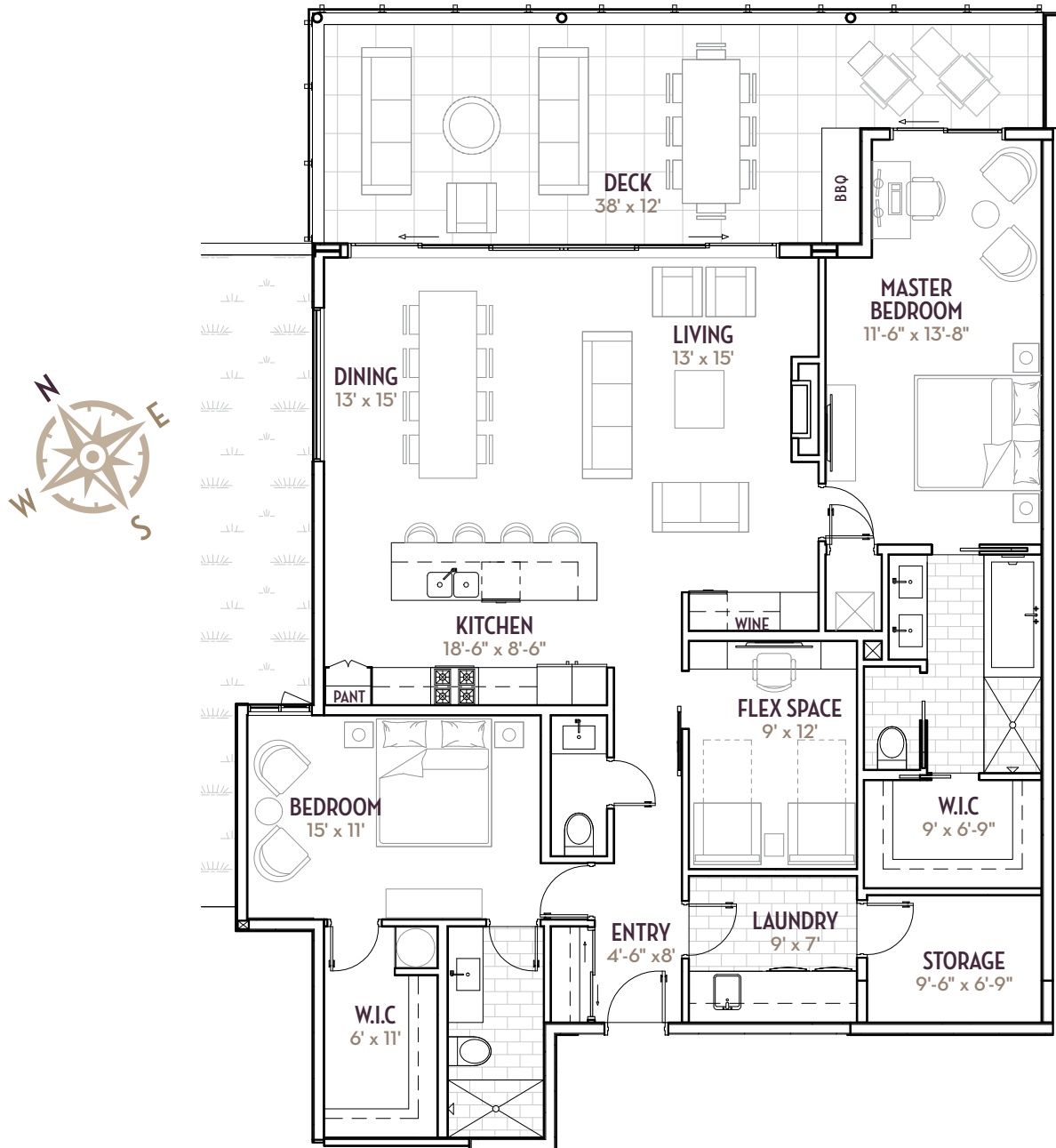
*Dimensions, layouts and specifications are approximates only and subject to change without notice.
All drawings and renderings are artist's conceptions only and for illustrative purposes only. E. & O.E.



ARIVA PREMIUM ESTATE LIVING

SUITE B (WEST)

2 bedroom *plus* flex space | 2.5 bath
2162 sq. ft. | 1762 sq. ft. *plus* 400 sq. ft. outdoor room



A one-of-a-kind
Okanagan community
created by: **ARIVA
RESORTS**

Designed by **m+m a**
the award winning
architectural firm: **MEIKLEJOHN ARCHITECTS INC.**

Working Together,
Winning Together.

TEAM CONSTRUCTION
MANAGEMENT LIMITED

ArivaKelowna.ca

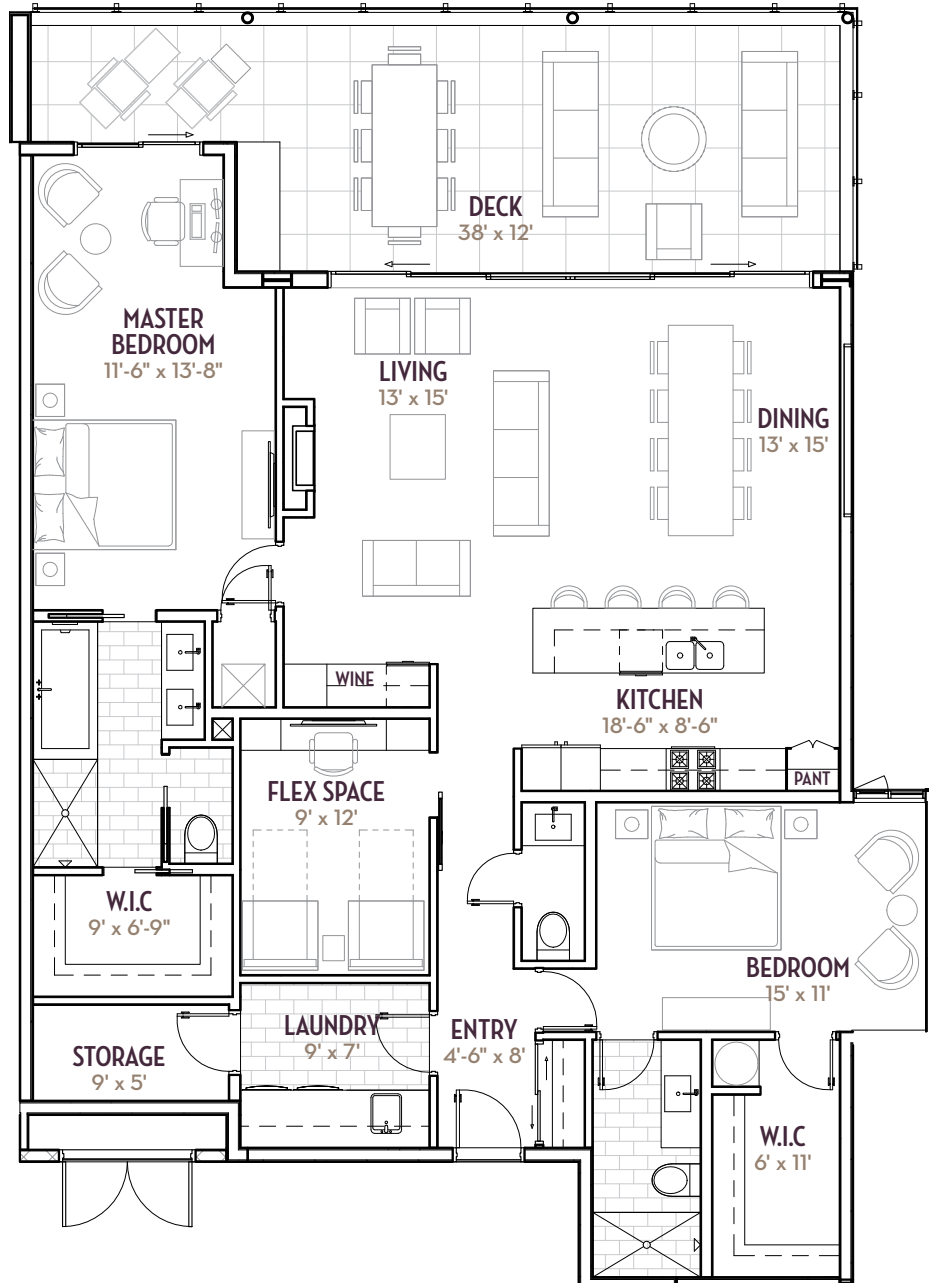
*Dimensions, layouts and specifications are approximates only and subject to change without notice.
All drawings and renderings are artist's conceptions only and for illustrative purposes only. E. & O.E.



ARIVA PREMIUM ESTATE LIVING

SUITE B (EAST)

2 bedroom *plus* flex space | 2.5 bath
2162 sq. ft. | 1762 sq. ft. *plus* 400 sq. ft. outdoor room



A one-of-a-kind
Okanagan community
created by: **ARIVA
RESORTS**

Designed by **m+m a**
the award winning
architectural firm: **MEIKLEJOHN ARCHITECTS INC.**

Working Together,
Winning Together.

TEAM CONSTRUCTION
MANAGEMENT LIMITED

ArivaKelowna.ca

*Dimensions, layouts and specifications are approximates only and subject to change without notice.
All drawings and renderings are artist's conceptions only and for illustrative purposes only. E. & O.E.

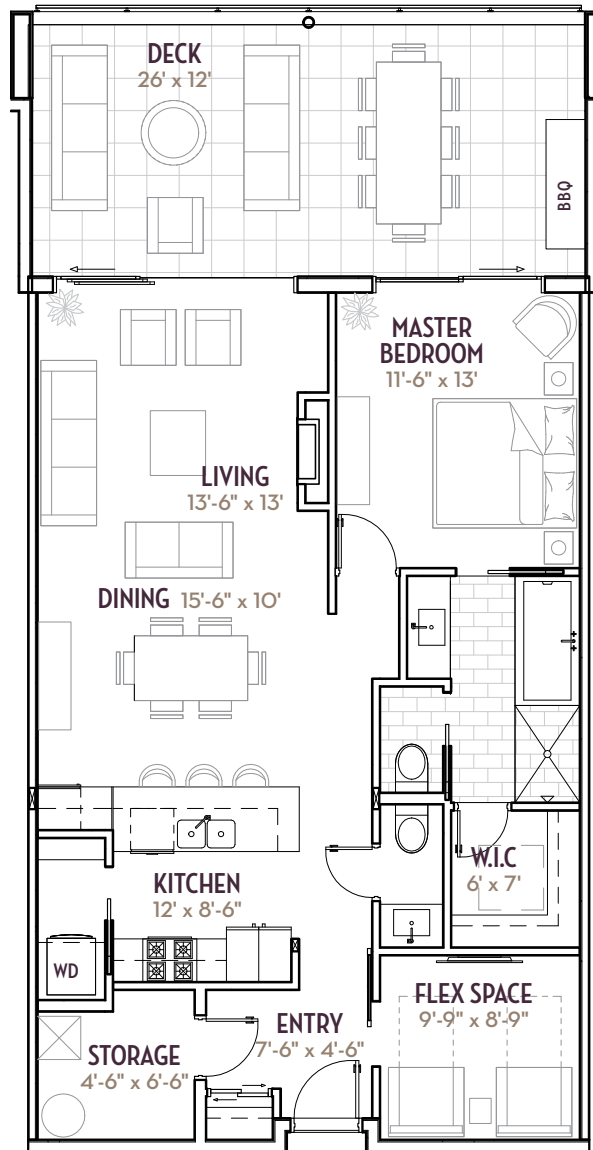


ARIVA PREMIUM ESTATE LIVING

SUITE C

1 bedroom *plus* flex space | 1.5 bath

1351 sq. ft. | 1040 sq. ft. *plus* 311 sq. ft. outdoor room



A one-of-a-kind
Okanagan community
created by: **ARIVA
RESORTS**

Designed by **m+m a**
the award winning
architectural firm: **MEIKLEJOHN ARCHITECTS INC.**

Working Together,
Winning Together.

TEAM CONSTRUCTION
MANAGEMENT LIMITED

ArivaKelowna.ca

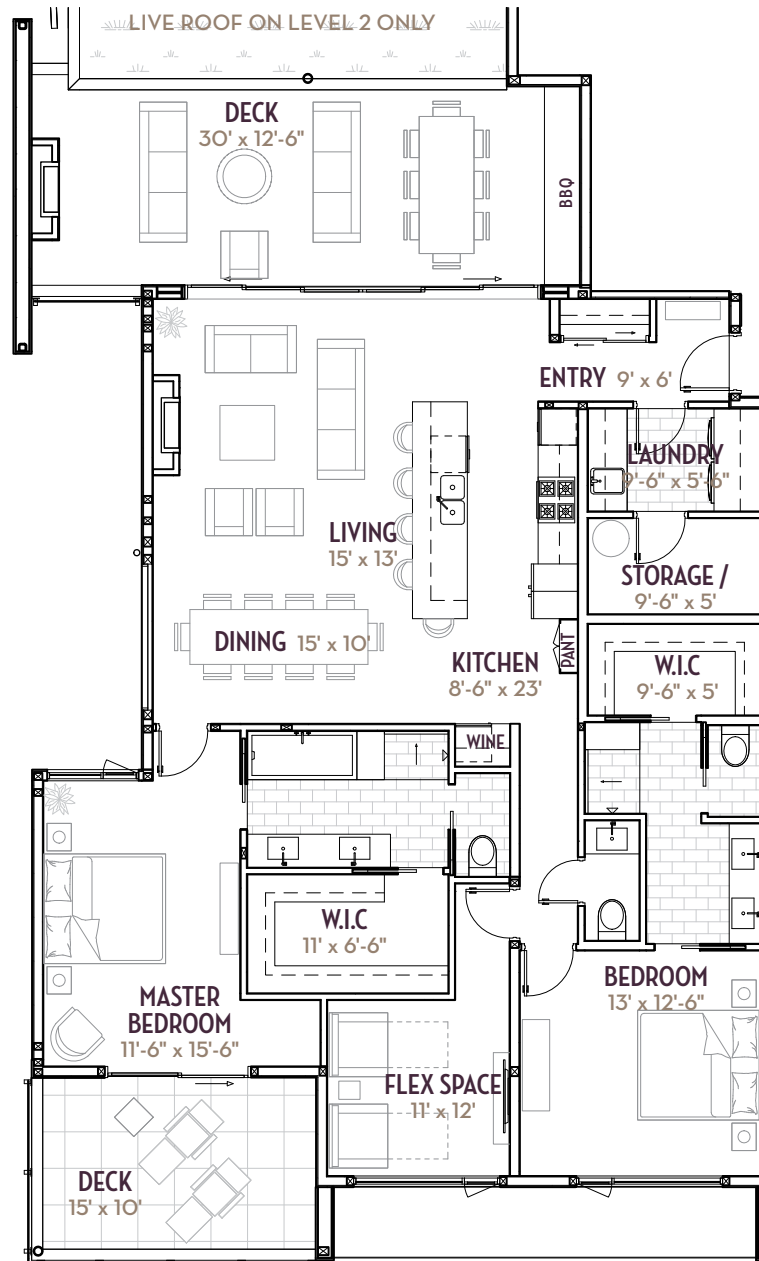
*Dimensions, layouts and specifications are approximates only and subject to change without notice.
All drawings and renderings are artist's conceptions only and for illustrative purposes only. E. & O.E.



ARIVA PREMIUM ESTATE LIVING

SUITE D (WEST)

2 bedroom *plus* flex space | 2.5 bath
2215 sq. ft. | 1732 sq. ft. *plus* 483 sq. ft. outdoor room



A one-of-a-kind
Okanagan community
created by: **ARIVA
RESORTS**

Designed by **m+m a**
the award winning
architectural firm: **MEIKLEJOHN ARCHITECTS INC.**

Working Together,
Winning Together.

TEAM CONSTRUCTION
MANAGEMENT LIMITED

ArivaKelowna.ca

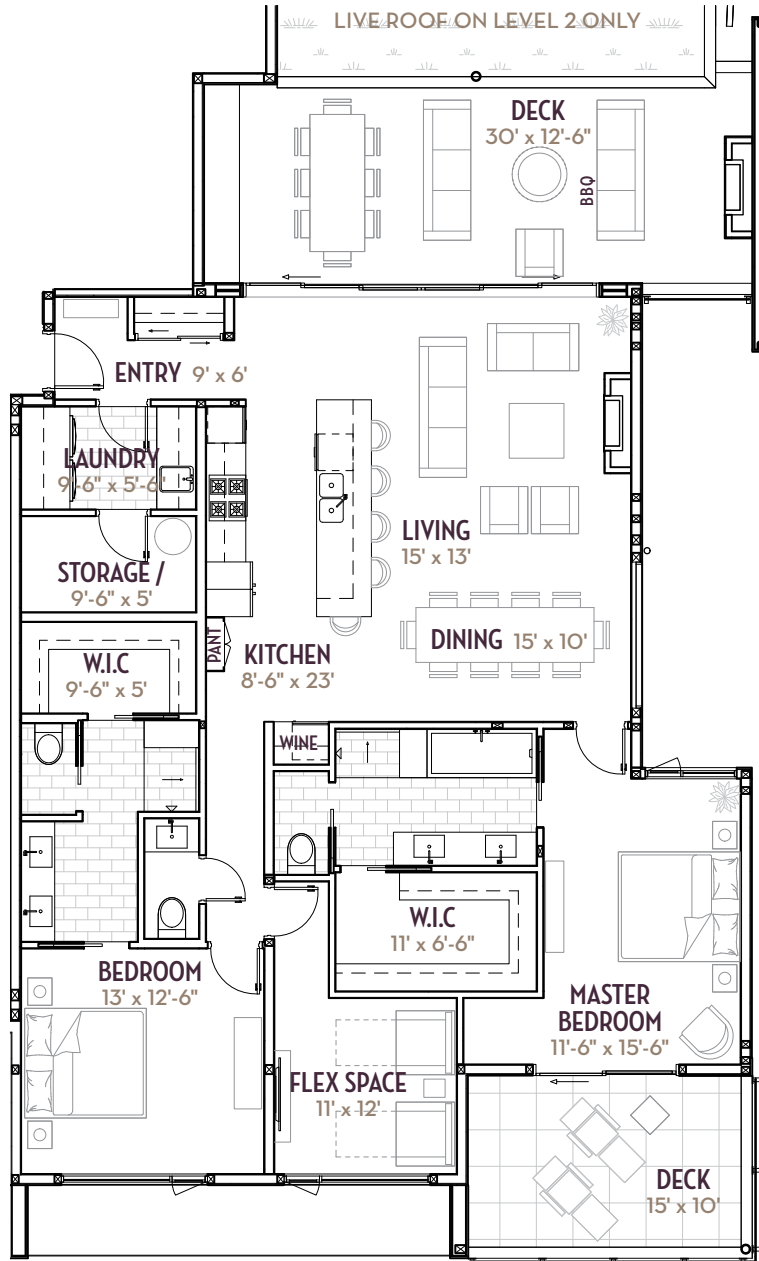
*Dimensions, layouts and specifications are approximates only and subject to change without notice.
All drawings and renderings are artist's conceptions only and for illustrative purposes only. E. & O.E.



ARIVA PREMIUM ESTATE LIVING

SUITE D (EAST)

2 bedroom *plus* flex space | 2.5 bath
2215 sq. ft. | 1732 sq. ft. *plus* 483 sq. ft. outdoor room



A one-of-a-kind
Okanagan community
created by: **ARIVA
RESORTS**

Designed by **m+m a**
the award winning
architectural firm: **MEIKLEJOHN ARCHITECTS INC.**

Working Together,
Winning Together.

TEAM CONSTRUCTION
MANAGEMENT LIMITED

ArivaKelowna.ca

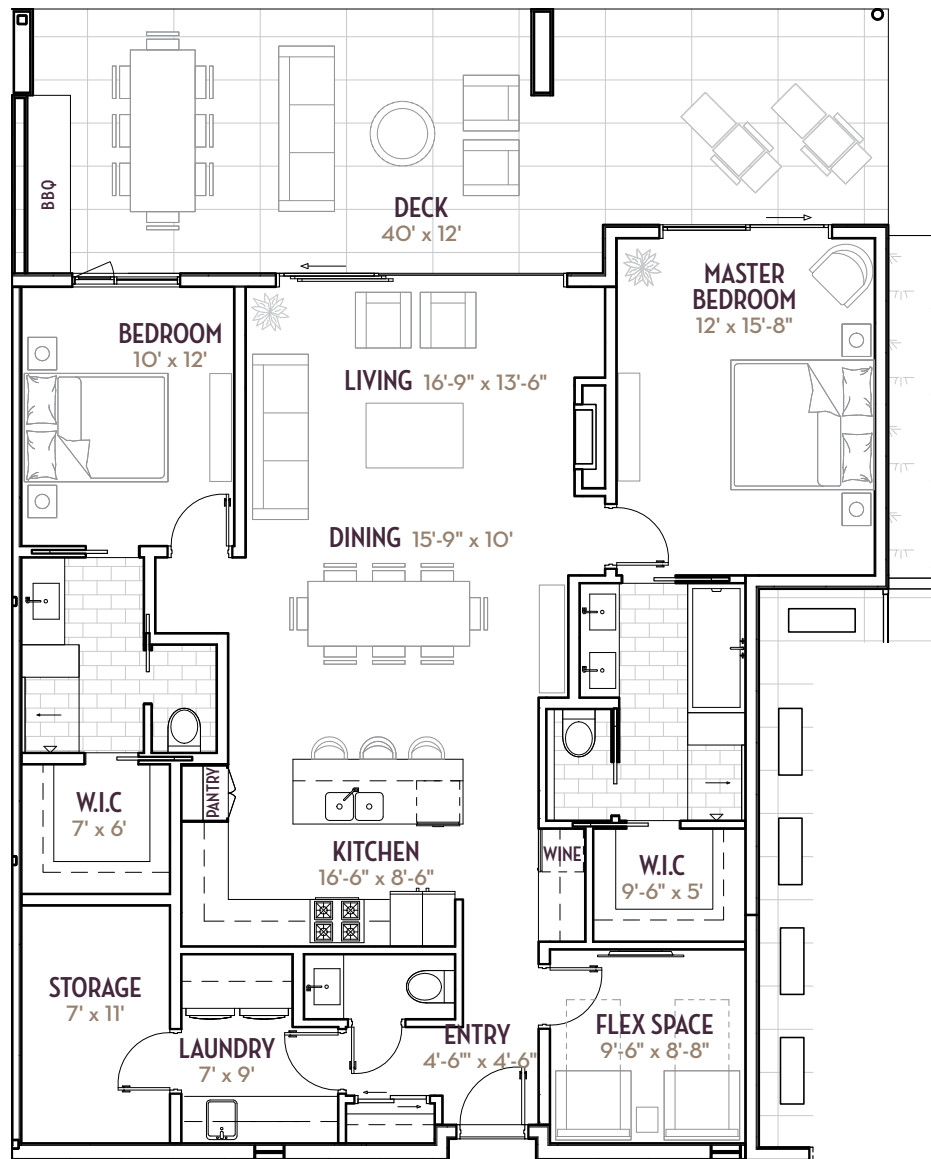
*Dimensions, layouts and specifications are approximates only and subject to change without notice.
All drawings and renderings are artist's conceptions only and for illustrative purposes only. E. & O.E.



ARIVA PREMIUM ESTATE LIVING

SUITE D1

2 bedroom *plus* flex space | 2.5 bath
1978 sq. ft. | 1510 sq. ft. *plus* 468 sq. ft. outdoor room



A one-of-a-kind
Okanagan community
created by: **ARIVA
RESORTS**

Designed by **m+m a**
the award winning
architectural firm: **MEIKLEJOHN ARCHITECTS INC.**

Working Together,
Winning Together.

TEAM CONSTRUCTION
MANAGEMENT LIMITED

ArivaKelowna.ca

*Dimensions, layouts and specifications are approximates only and subject to change without notice.
All drawings and renderings are artist's conceptions only and for illustrative purposes only. E. & O.E.

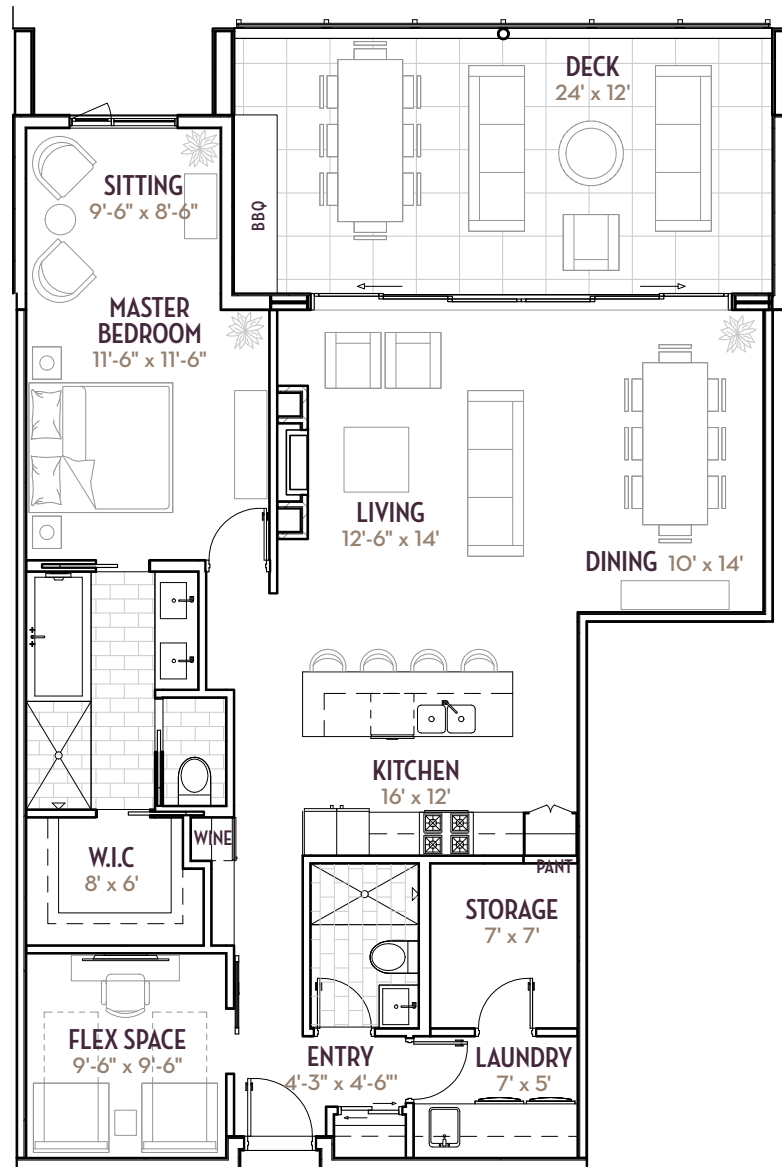


ARIVA PREMIUM ESTATE LIVING

SUITE E

1 bedroom *plus* flex space | 2 bath

1570 sq. ft. | 1271 sq. ft. *plus* 299 sq. ft. outdoor room



A one-of-a-kind
Okanagan community
created by: **ARIVA
RESORTS**

Designed by **m+m a**
the award winning
architectural firm: **MEIKLEJOHN ARCHITECTS INC.**

Working Together,
Winning Together.

TEAM CONSTRUCTION
MANAGEMENT LIMITED

ArivaKelowna.ca

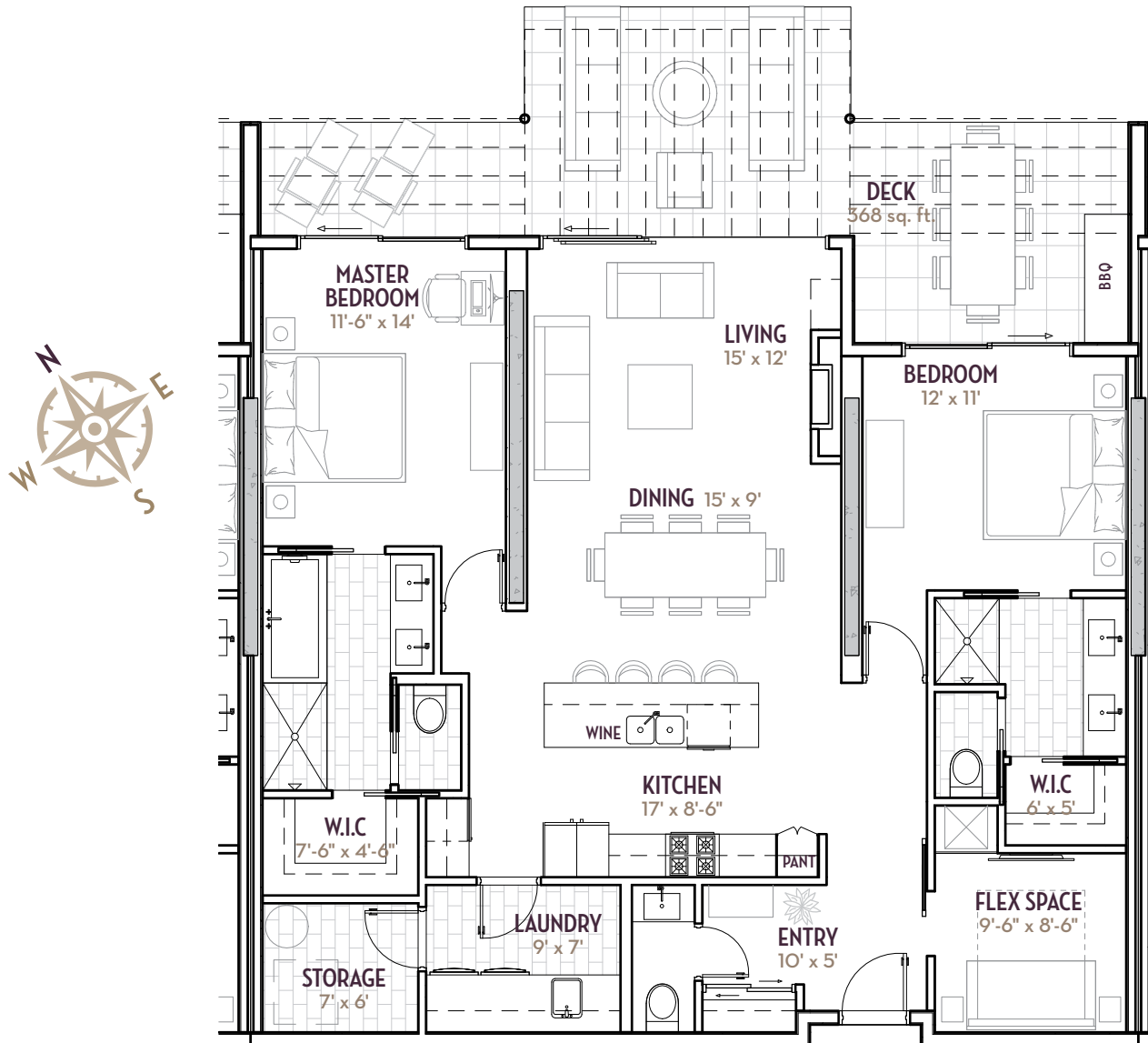
*Dimensions, layouts and specifications are approximates only and subject to change without notice.
All drawings and renderings are artist's conceptions only and for illustrative purposes only. E. & O.E.



ARIVA PREMIUM ESTATE LIVING

SUITE G

2 bedroom *plus* flex space | 2.5 bath
1861 sq. ft. | 1445 sq. ft. *plus* 416 sq. ft. outdoor room





ARIVA PREMIUM ESTATE LIVING

PENTHOUSE 1A

3 bedroom | 3.5 bath

2894 sq. ft. | 2319 sq. ft. *plus* 575 sq. ft. deck area



A one-of-a-kind
Okanagan community
created by: **ARIVA
RESORTS**

Designed by **m+m a**
the award winning
architectural firm: **MEIKLEJOHN ARCHITECTS INC.**

Working Together,
Winning Together.

TEAM CONSTRUCTION
MANAGEMENT LIMITED

ArivaKelowna.ca

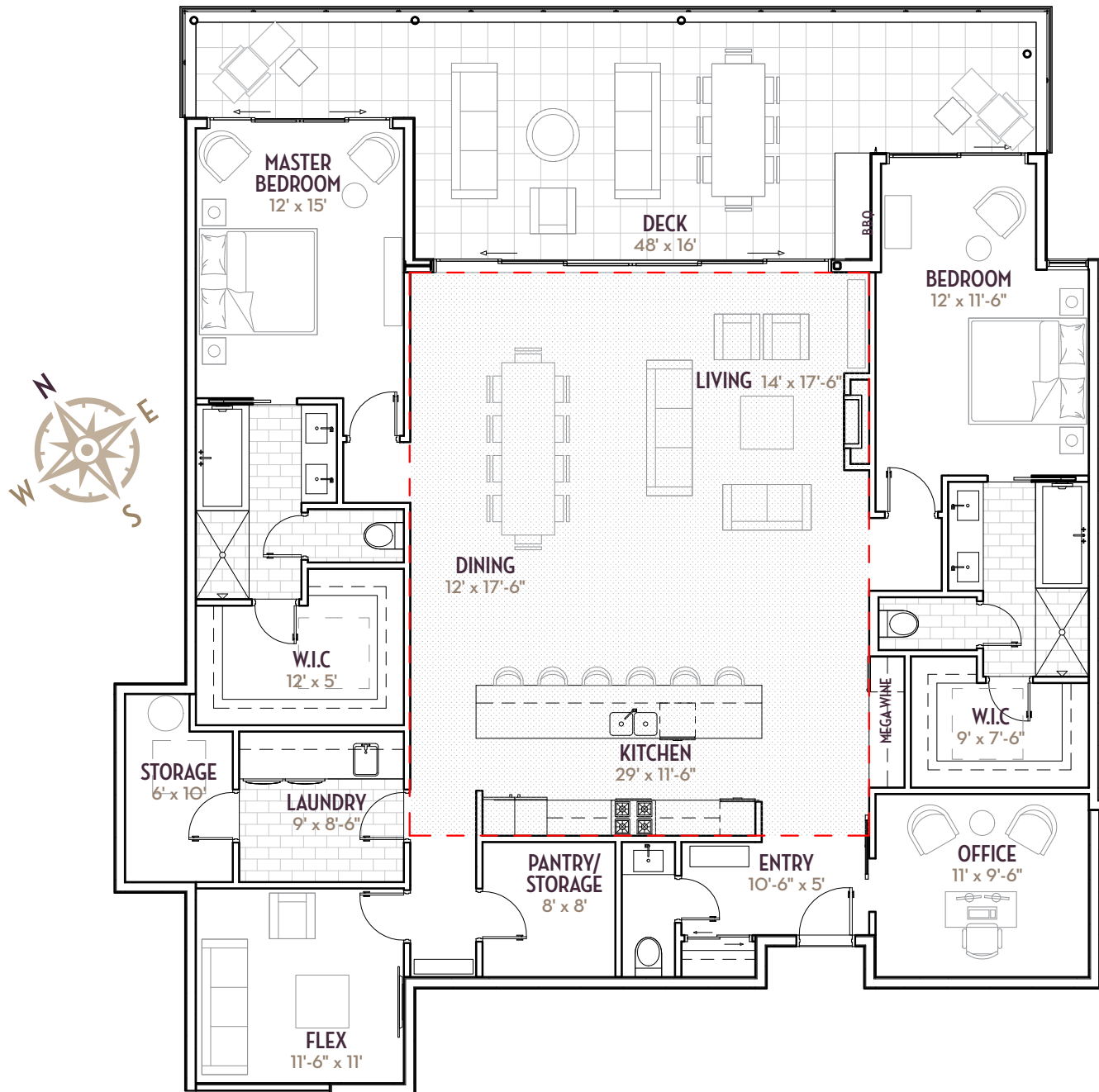
*Dimensions, layouts and specifications are approximates only and subject to change without notice.
All drawings and renderings are artist's conceptions only and for illustrative purposes only. E. & O.E.



ARIVA PREMIUM ESTATE LIVING

PENTHOUSE 1B

2 bedroom *plus* flex space | 2.5 bath
2894 sq. ft. | 2319 sq. ft. *plus* 575 sq. ft. deck area



A one-of-a-kind
Okanagan community
created by: **ARIVA
RESORTS**

Designed by **m+m a**
the award winning
architectural firm: **MEIKLEJOHN ARCHITECTS INC.**

Working Together,
Winning Together.

TEAM CONSTRUCTION
MANAGEMENT LIMITED

ArivaKelowna.ca

*Dimensions, layouts and specifications are approximates only and subject to change without notice.
All drawings and renderings are artist's conceptions only and for illustrative purposes only. E. & O.E.

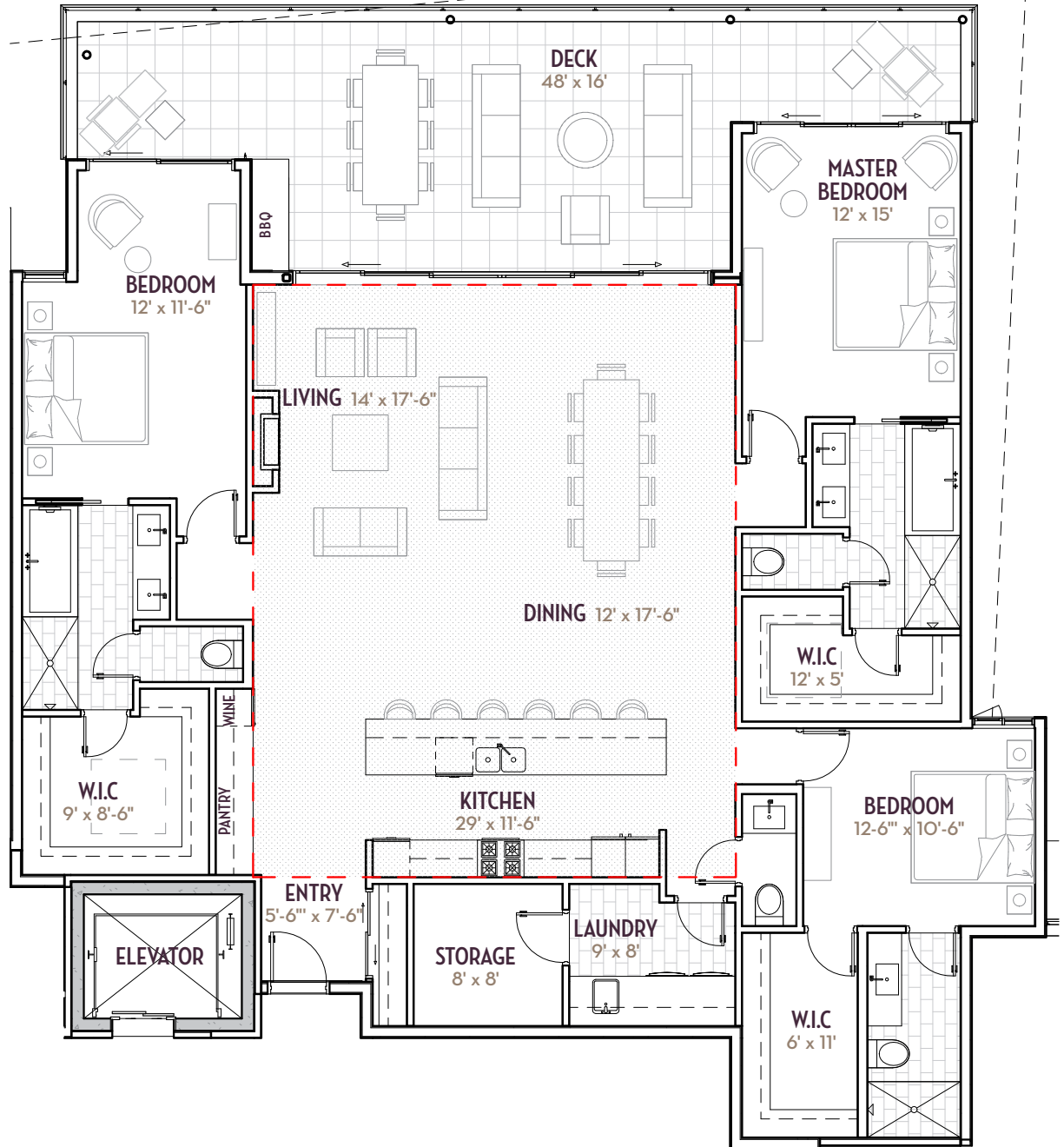


ARIVA PREMIUM ESTATE LIVING

PENTHOUSE 2A

3 bedroom | 3.5 bath

2766 sq. ft. | 2191 sq. ft. *plus* 575 sq. ft. deck area



A one-of-a-kind
Okanagan community
created by: **ARIVA
RESORTS**

Designed by **m+m a**
the award winning
architectural firm: **MEIKLEJOHN ARCHITECTS INC.**

Working Together,
Winning Together.

TEAM CONSTRUCTION
MANAGEMENT LIMITED

ArivaKelowna.ca

*Dimensions, layouts and specifications are approximates only and subject to change without notice.
All drawings and renderings are artist's conceptions only and for illustrative purposes only. E. & O.E.



ARIVA PREMIUM ESTATE LIVING

PENTHOUSE 2B

2 bedroom *plus* flex space | 2.5 bath
2796 sq. ft. | 2221 sq. ft. *plus* 575 sq. ft. deck area



A one-of-a-kind
Okanagan community
created by: **ARIVA
RESORTS**

Designed by **m+m a**
the award winning
architectural firm: **MEIKLEJOHN ARCHITECTS INC.**

Working Together,
Winning Together.

TEAM CONSTRUCTION
MANAGEMENT LIMITED

ArivaKelowna.ca

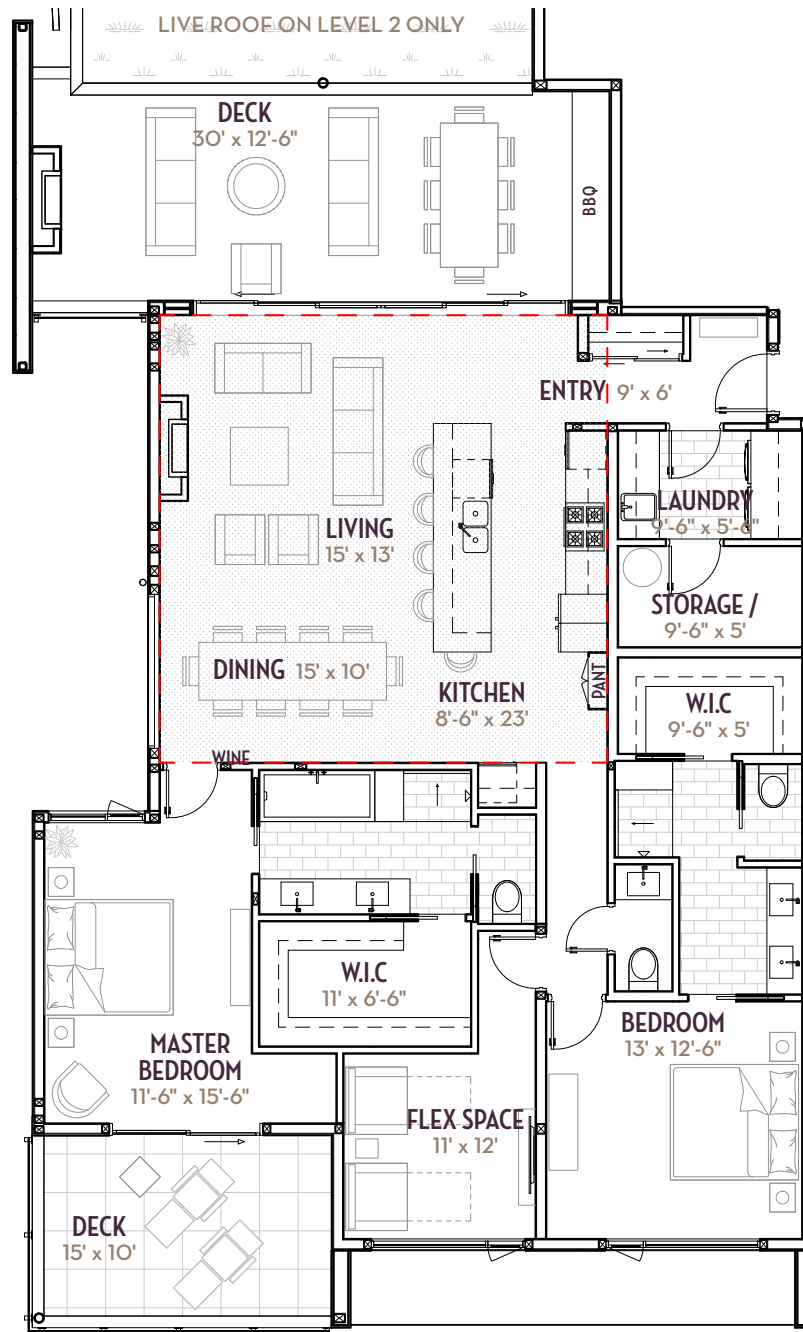
*Dimensions, layouts and specifications are approximates only and subject to change without notice.
All drawings and renderings are artist's conceptions only and for illustrative purposes only. E. & O.E.



ARIVA PREMIUM ESTATE LIVING

PENTHOUSE 3

2 bedroom *plus* flex space | 2.5 bath
2215 sq. ft. | 1732 sq. ft. *plus* 483 sq. ft. outdoor room



A one-of-a-kind
Okanagan community
created by: **ARIVA
RESORTS**

Designed by **m+m a**
the award winning
architectural firm: **MEIKLEJOHN ARCHITECTS INC.**

Working Together,
Winning Together.

TEAM CONSTRUCTION
MANAGEMENT LIMITED

ArivaKelowna.ca

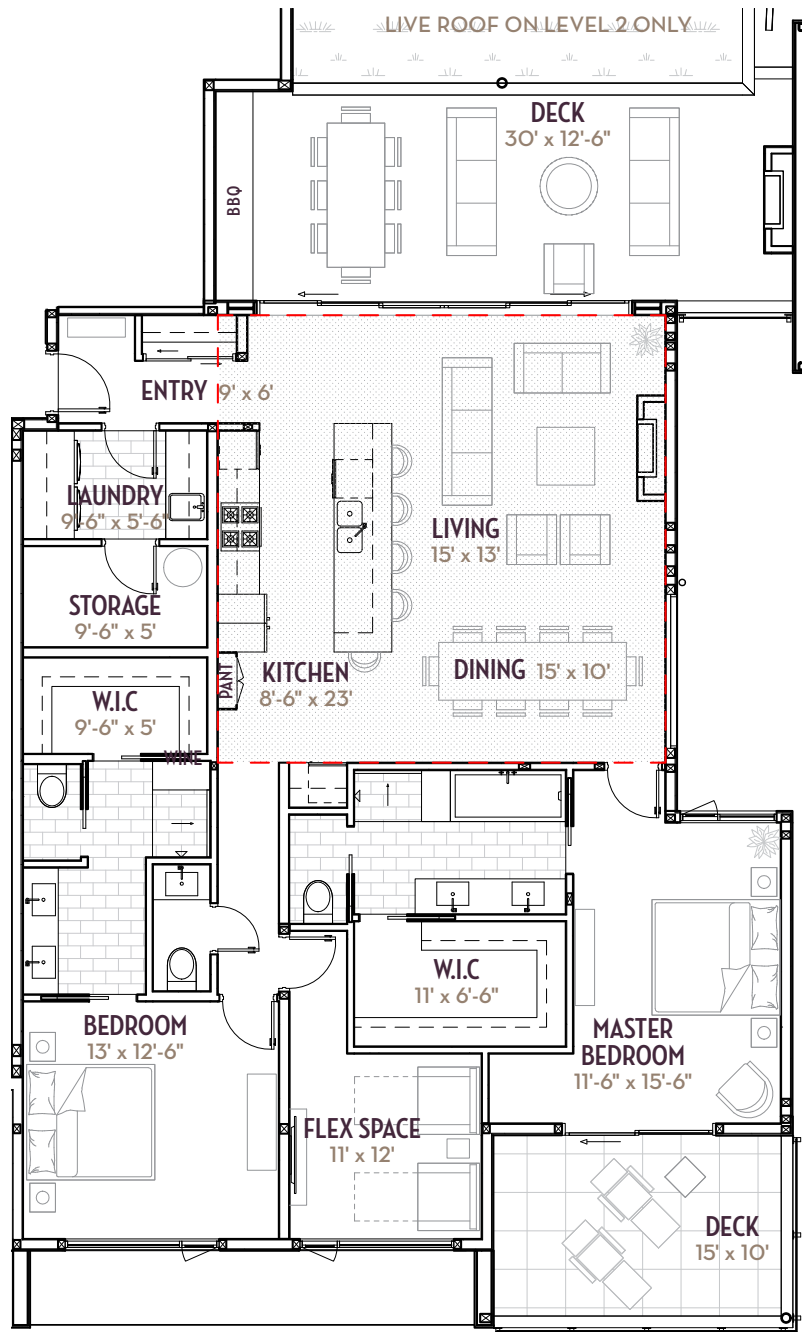
*Dimensions, layouts and specifications are approximates only and subject to change without notice.
All drawings and renderings are artist's conceptions only and for illustrative purposes only. E. & O.E.



ARIVA PREMIUM ESTATE LIVING

PENTHOUSE 4

2 bedroom *plus* flex space | 2.5 bath
2215 sq. ft. | 1732 sq. ft. *plus* 483 sq. ft. outdoor room



A one-of-a-kind
Okanagan community
created by: **ARIVA
RESORTS**

Designed by **m+m a**
the award winning
architectural firm: **MEIKLEJOHN ARCHITECTS INC.**

Working Together,
Winning Together.

TEAM CONSTRUCTION
MANAGEMENT LIMITED

ArivaKelowna.ca

*Dimensions, layouts and specifications are approximates only and subject to change without notice.
All drawings and renderings are artist's conceptions only and for illustrative purposes only. E. & O.E.