



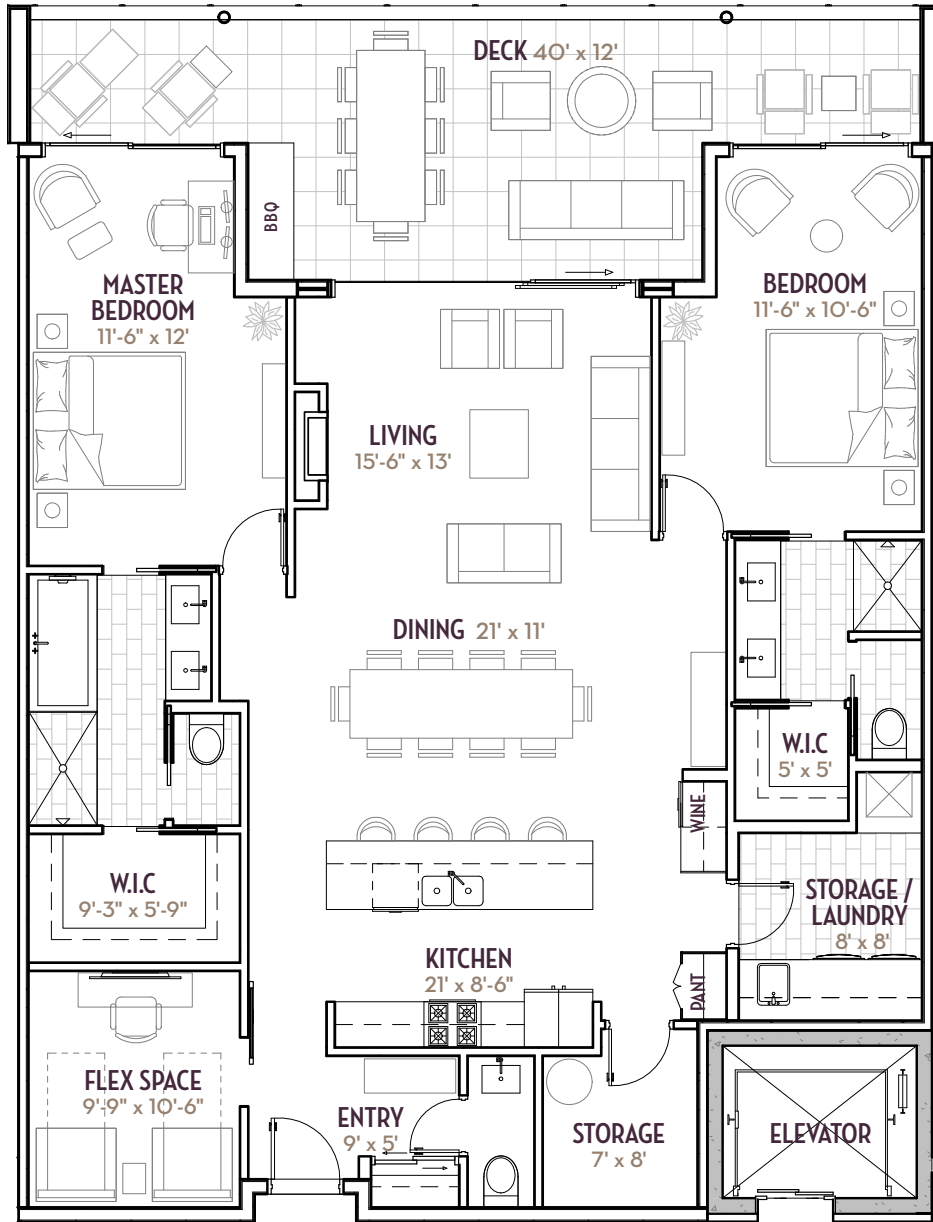
ARIVA PREMIUM ESTATE LIVING

# SUITE A

2 bedroom *plus* flex space | 2.5 bath  
2026 sq. ft. | 1673 sq. ft. *plus* 353 sq. ft. outdoor room



PHASE 2



A one-of-a-kind Okanagan community created by **ARIVA RESORTS**

Designed by **m+m a**  
the award winning architectural firm: **MEIKLEJOHN ARCHITECTS INC.**

Working Together, Winning Together. **TEAM CONSTRUCTION MANAGEMENT LIMITED**

**ArivaKelowna.ca**

\*Dimensions, layouts and specifications are approximates only and subject to change without notice. All drawings and renderings are artist's conceptions only and for illustrative purposes only. E. & O.E.



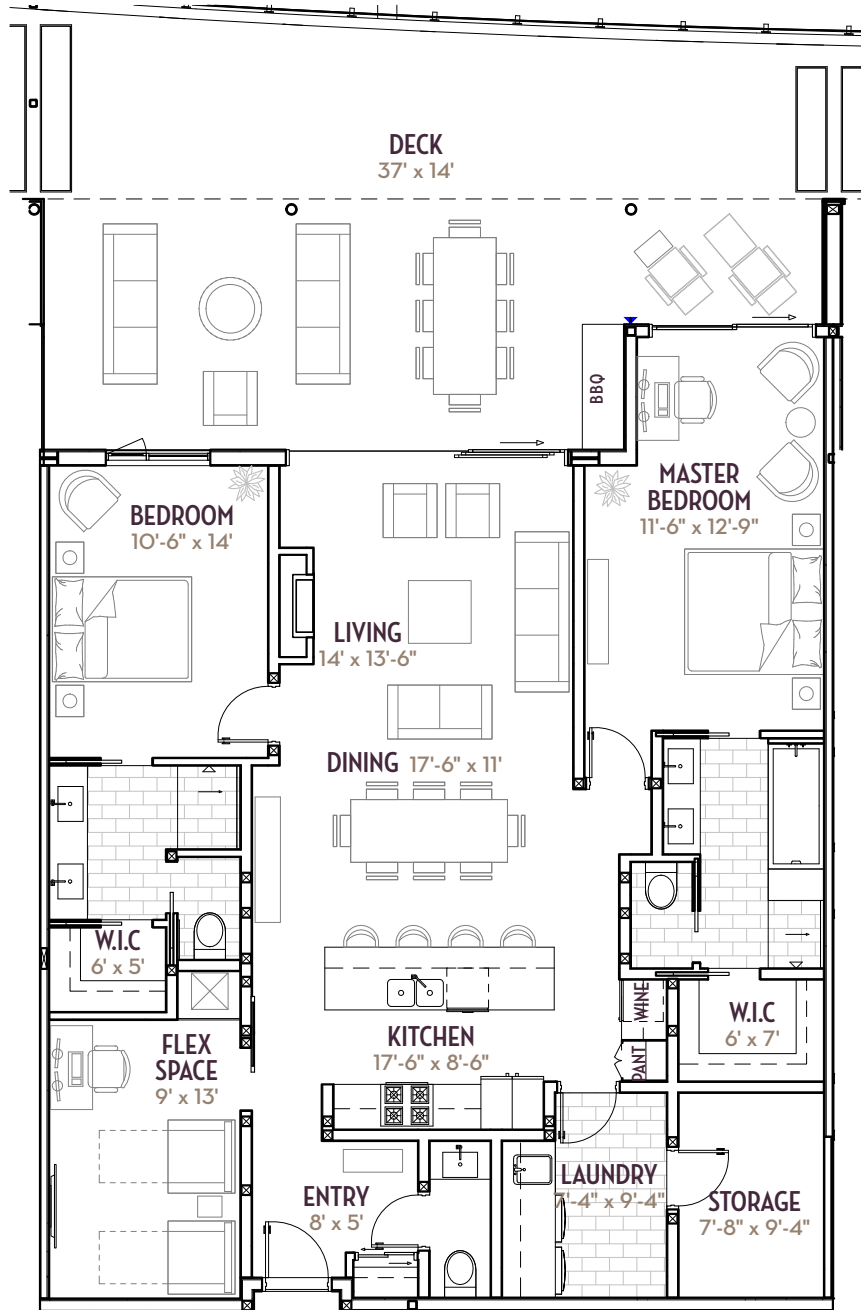
ARIVA PREMIUM ESTATE LIVING

# SUITE A1 (WEST)

2 bedroom *plus flex space* | 2.5 bath  
2000 sq. ft. | 1610 sq. ft. *plus* 390 sq. ft. outdoor room



PHASE 2



A one-of-a-kind Okanagan community created by **ARIVA RESORTS**

Designed by **m+m a**  
the award winning architectural firm: **MEIKLEJOHN ARCHITECTS INC.**

Working Together, Winning Together. **TEAM CONSTRUCTION**  
MANAGEMENT LIMITED

**ArivaKelowna.ca**

\*Dimensions, layouts and specifications are approximates only and subject to change without notice. All drawings and renderings are artist's conceptions only and for illustrative purposes only. E. & O.E.



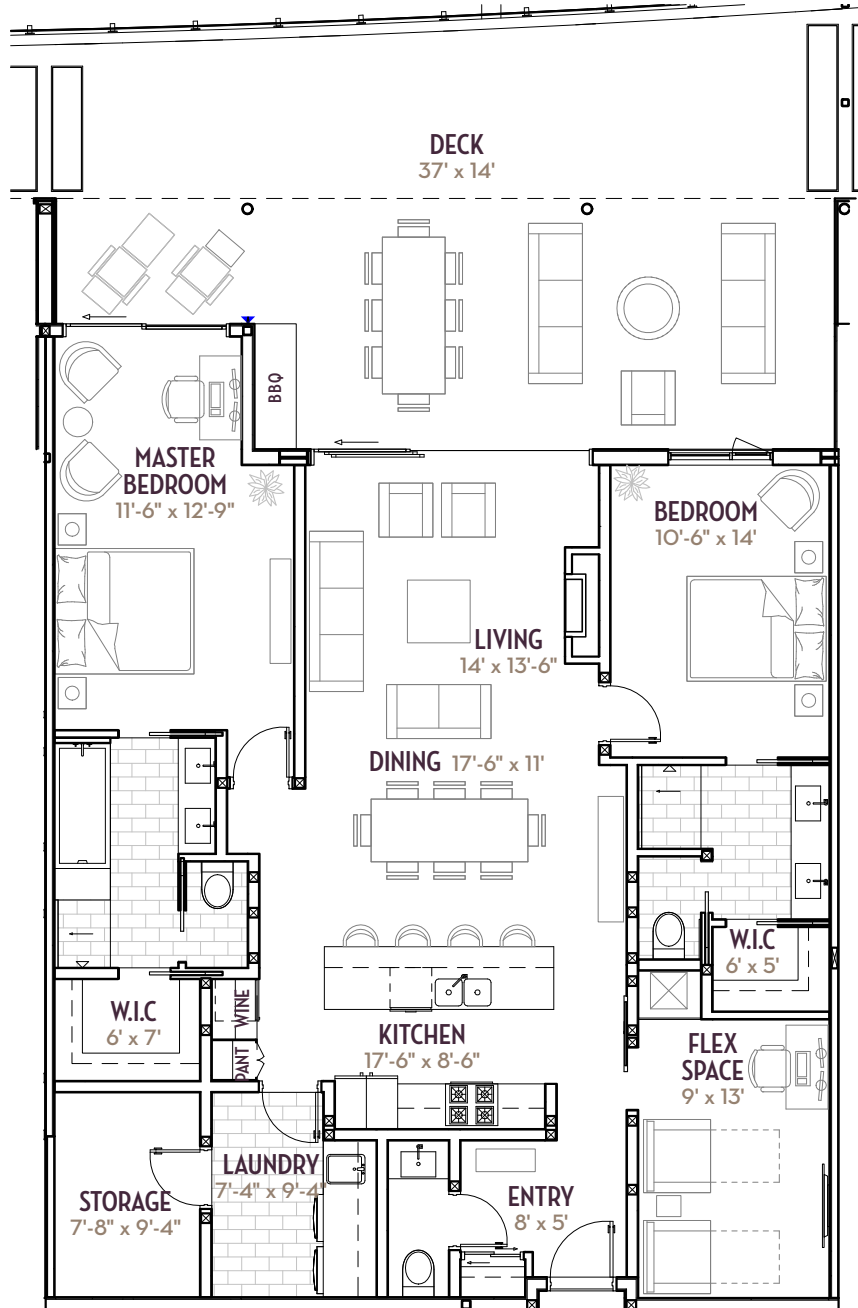
ARIVA PREMIUM ESTATE LIVING

# SUITE A1 (EAST)

2 bedroom *plus flex space* | 2.5 bath  
2000 sq. ft. | 1610 sq. ft. *plus* 390 sq. ft. outdoor room



PHASE 2



A one-of-a-kind Okanagan community created by **ARIVA RESORTS**

Designed by **m+m a**  
the award winning architectural firm: **MEIKLEJOHN ARCHITECTS INC.**

Working Together, **TEAM CONSTRUCTION** Management Limited  
Working Together.

**ArivaKelowna.ca**

\*Dimensions, layouts and specifications are approximates only and subject to change without notice. All drawings and renderings are artist's conceptions only and for illustrative purposes only. E. & O.E.



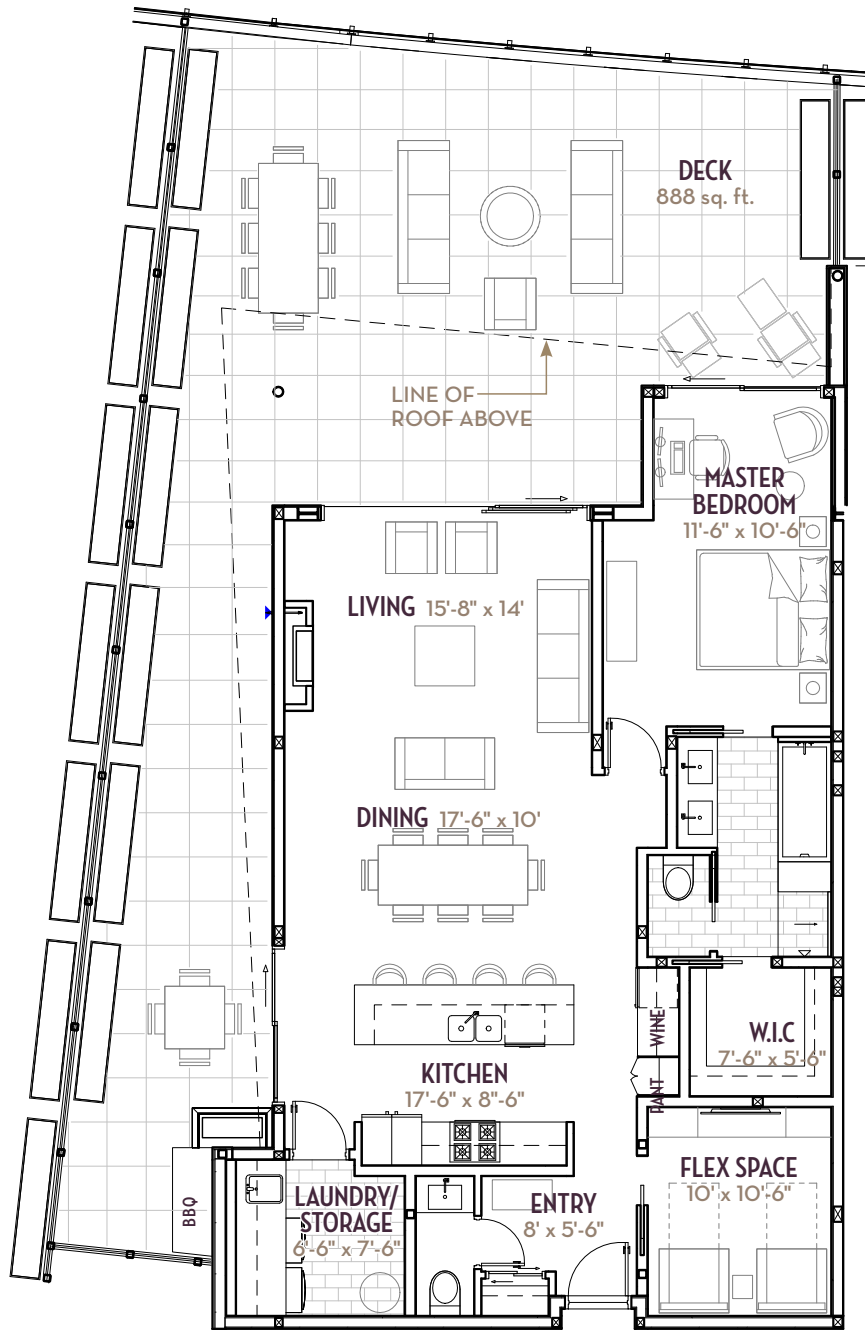
ARIVA PREMIUM ESTATE LIVING

# SUITE A2 (WEST)

1 bedroom *plus* den | 1.5 bath  
1948 sq. ft. | 1246 sq. ft. *plus* 702 sq. ft. outdoor room



PHASE 2



A one-of-a-kind Okanagan community created by **ARIVA RESORTS**

Designed by **m+m a**  
the award winning architectural firm: **MEIKLEJOHN ARCHITECTS INC.**

Working Together, Winning Together. **TEAM CONSTRUCTION**  
MANAGEMENT LIMITED

**ArivaKelowna.ca**

\*Dimensions, layouts and specifications are approximates only and subject to change without notice. All drawings and renderings are artist's conceptions only and for illustrative purposes only. E. & O.E.



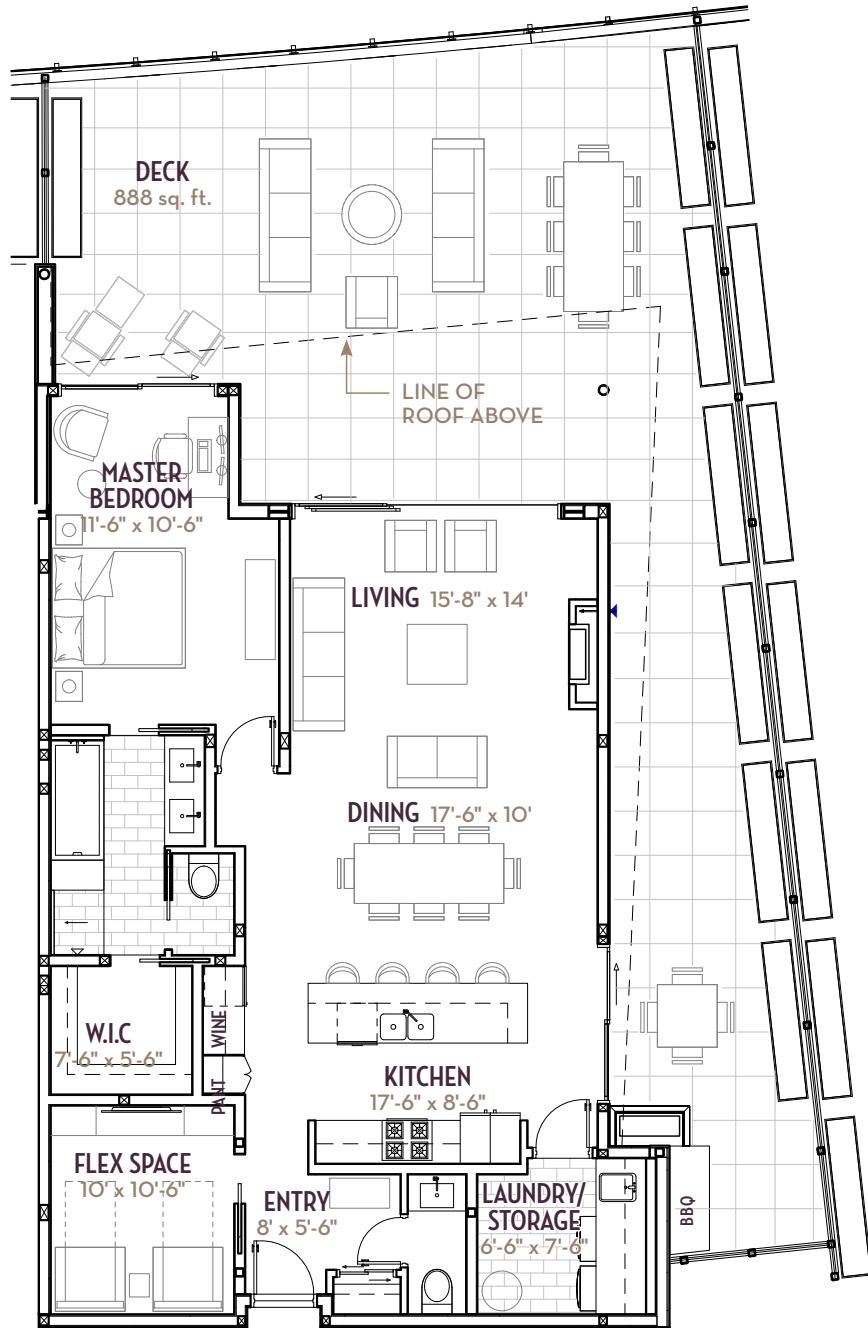
ARIVA PREMIUM ESTATE LIVING

# SUITE A2 (EAST)

1 bedroom *plus* den | 1.5 bath  
1948 sq. ft. | 1246 sq. ft. *plus* 702 sq. ft. outdoor room



PHASE 2



A one-of-a-kind Okanagan community created by **ARIVA RESORTS**

Designed by **m+m a** the award winning architectural firm: **MEIKLEJOHN ARCHITECTS INC.**

Working Together, Winning Together. **TEAM CONSTRUCTION MANAGEMENT LIMITED**

**ArivaKelowna.ca**

\*Dimensions, layouts and specifications are approximates only and subject to change without notice. All drawings and renderings are artist's conceptions only and for illustrative purposes only. E. & O.E.



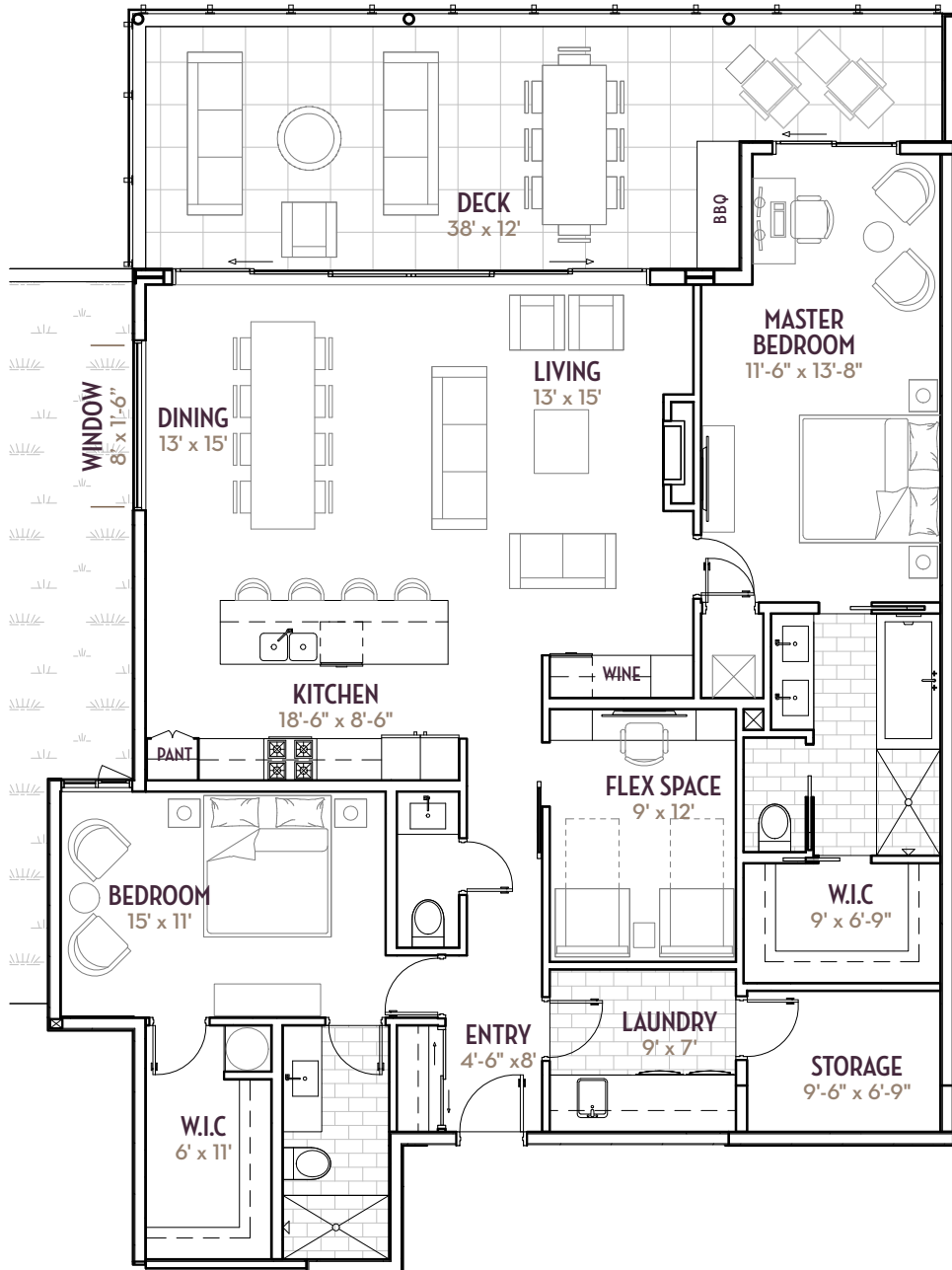
ARIVA PREMIUM ESTATE LIVING

# SUITE B (WEST)

2 bedroom *plus* flex space | 2.5 bath  
2162 sq. ft. | 1762 sq. ft. *plus* 400 sq. ft. outdoor room



PHASE 2



A one-of-a-kind Okanagan community created by **ARIVA RESORTS**

Designed by **m+m a**  
the award winning architectural firm: **MEIKLEJOHN ARCHITECTS INC.**

Working Together,  
Winning Together.

**TEAM CONSTRUCTION**  
MANAGEMENT LIMITED

**ArivaKelowna.ca**

\*Dimensions, layouts and specifications are approximates only and subject to change without notice. All drawings and renderings are artist's conceptions only and for illustrative purposes only. E. & O.E.



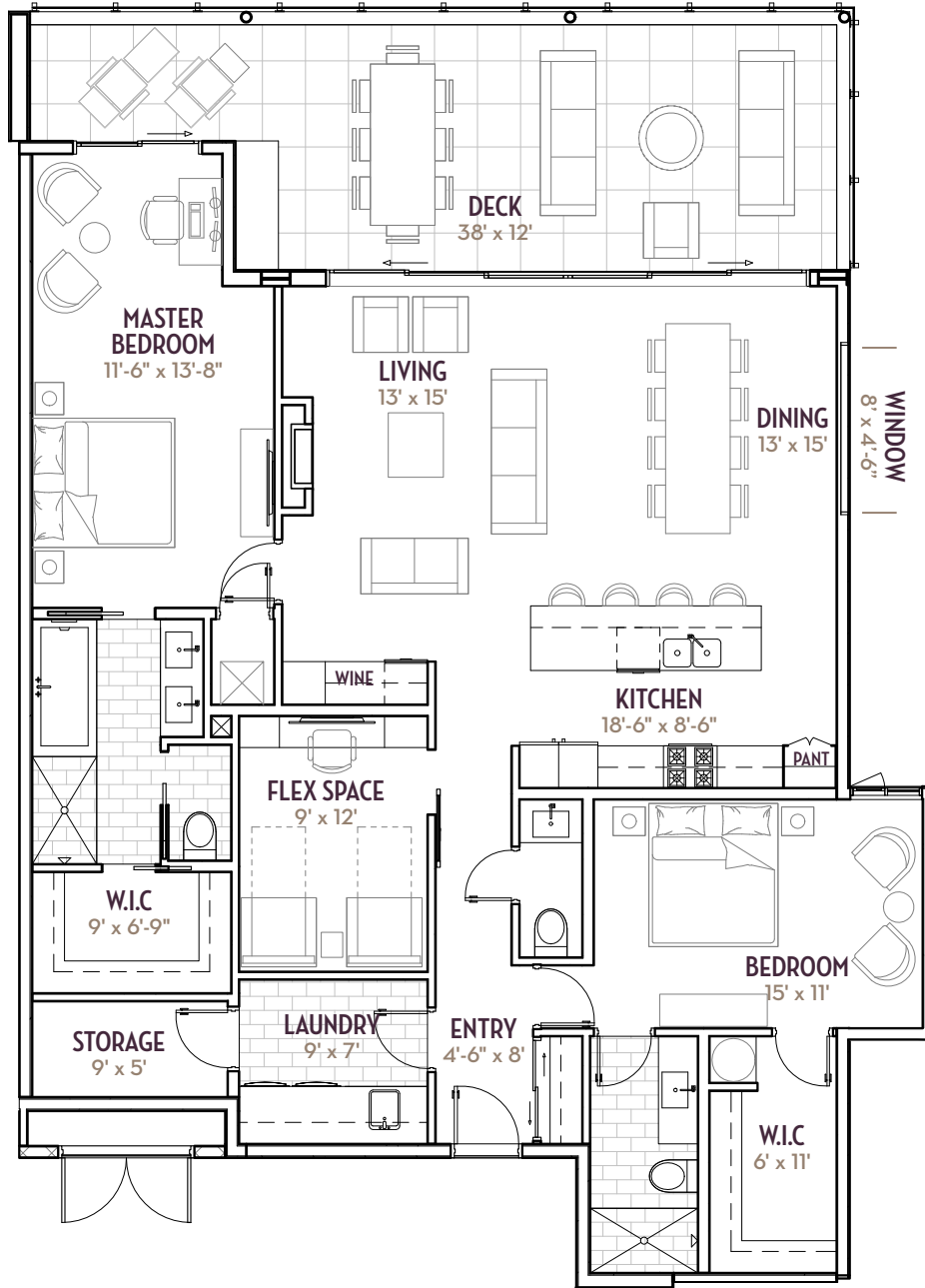
ARIVA PREMIUM ESTATE LIVING

# SUITE B (EAST)

2 bedroom *plus flex space* | 2.5 bath  
2146 sq. ft. | 1746 sq. ft. *plus* 400 sq. ft. outdoor room



PHASE 2





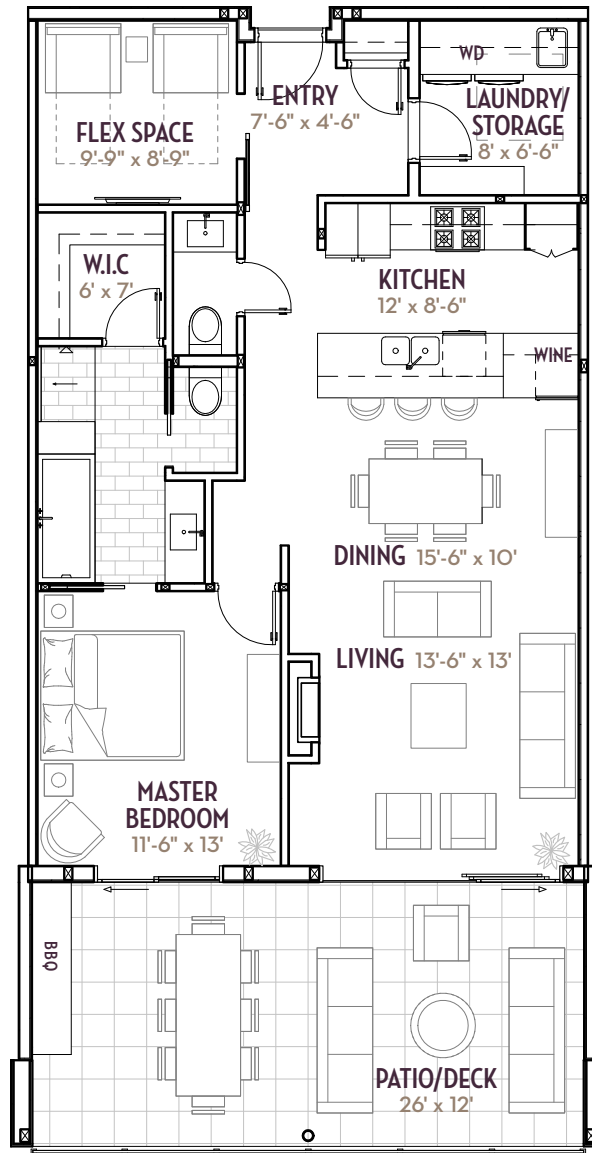
ARIVA PREMIUM ESTATE LIVING

# SUITE C

1 bedroom *plus* flex space | 1.5 bath  
1351 sq. ft. | 1040 sq. ft. *plus* 311 sq. ft. outdoor room



PHASE 2



A one-of-a-kind Okanagan community created by **ARIVA RESORTS**

Designed by **m+m a**  
the award winning architectural firm: **MEIKLEJOHN ARCHITECTS INC.**

Working Together, Winning Together. **TEAM CONSTRUCTION MANAGEMENT LIMITED**

**ArivaKelowna.ca**

\*Dimensions, layouts and specifications are approximates only and subject to change without notice. All drawings and renderings are artist's conceptions only and for illustrative purposes only. E. & O.E.





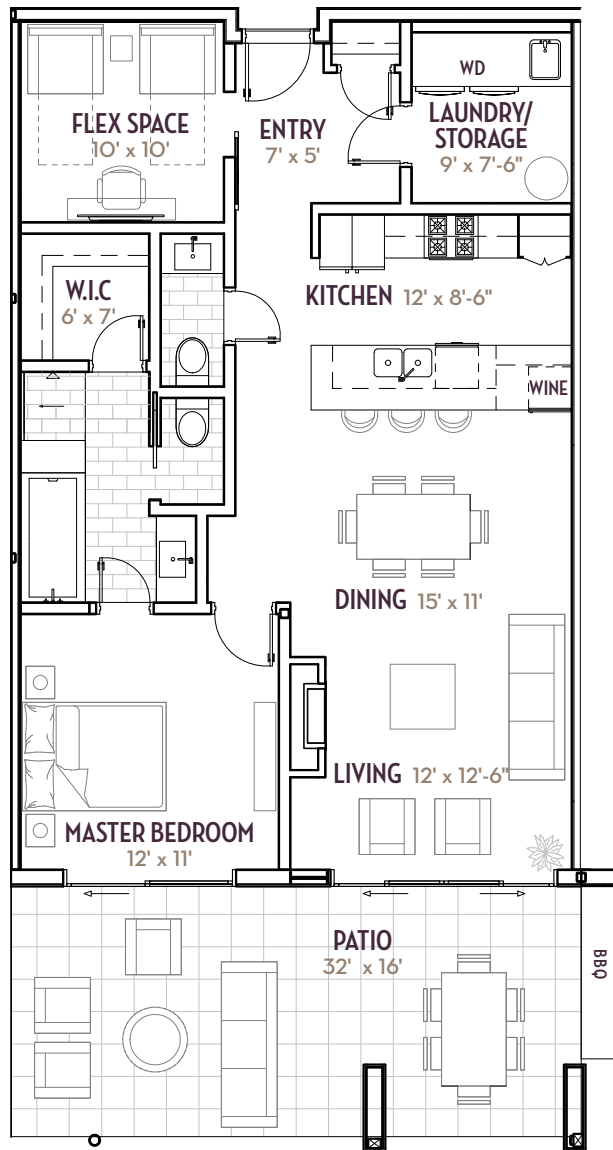
ARIVA PREMIUM ESTATE LIVING

# SUITE C1

1 bedroom *plus* flex space | 1.5 bath  
1351 sq. ft. | 1040 sq. ft. *plus* 311 sq. ft. outdoor room



PHASE 2



A one-of-a-kind Okanagan community created by **ARIVA RESORTS**

Designed by **m+m a**  
the award winning architectural firm: **MEIKLEJOHN ARCHITECTS INC.**

Working Together, Winning Together. **TEAM CONSTRUCTION MANAGEMENT LIMITED**

**ArivaKelowna.ca**

\*Dimensions, layouts and specifications are approximates only and subject to change without notice. All drawings and renderings are artist's conceptions only and for illustrative purposes only. E. & O.E.



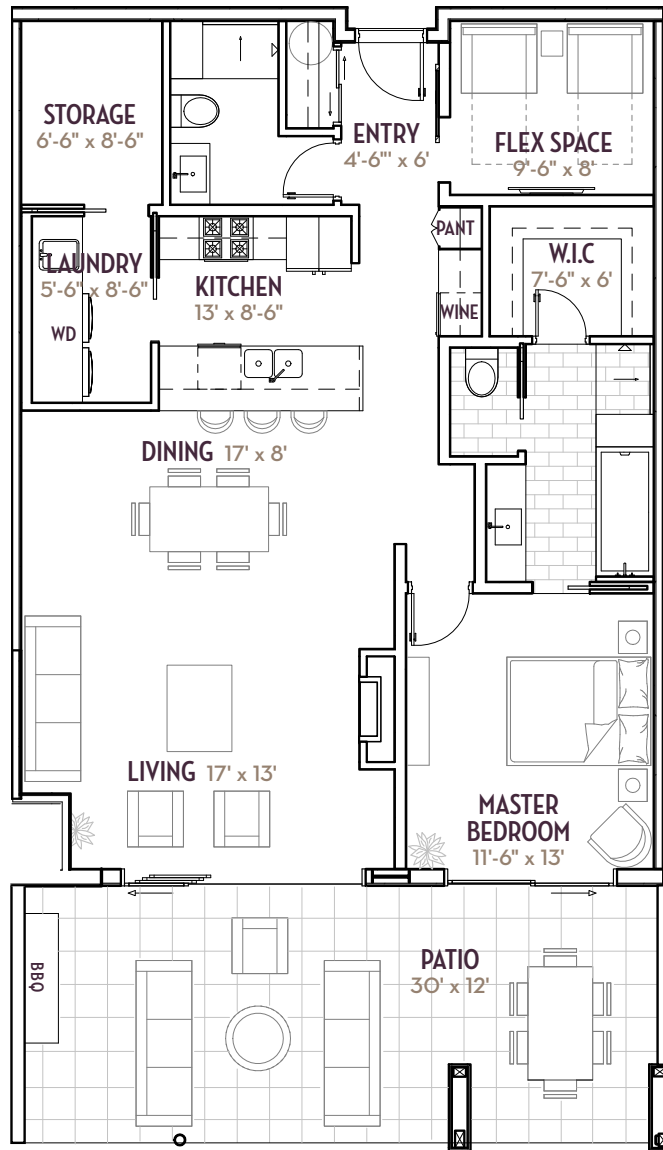
ARIVA PREMIUM ESTATE LIVING

# SUITE C2

1 bedroom *plus flex space* | 1.5 bath  
1573 sq. ft. | 1213 sq. ft. *plus* 360 sq. ft. outdoor room



PHASE 2



A one-of-a-kind Okanagan community created by **ARIVA RESORTS**

Designed by **m+m a**  
the award winning architectural firm: **MEIKLEJOHN ARCHITECTS INC.**

Working Together, Winning Together. **TEAM CONSTRUCTION**  
MANAGEMENT LIMITED

**ArivaKelowna.ca**

\*Dimensions, layouts and specifications are approximates only and subject to change without notice. All drawings and renderings are artist's conceptions only and for illustrative purposes only. E. & O.E.



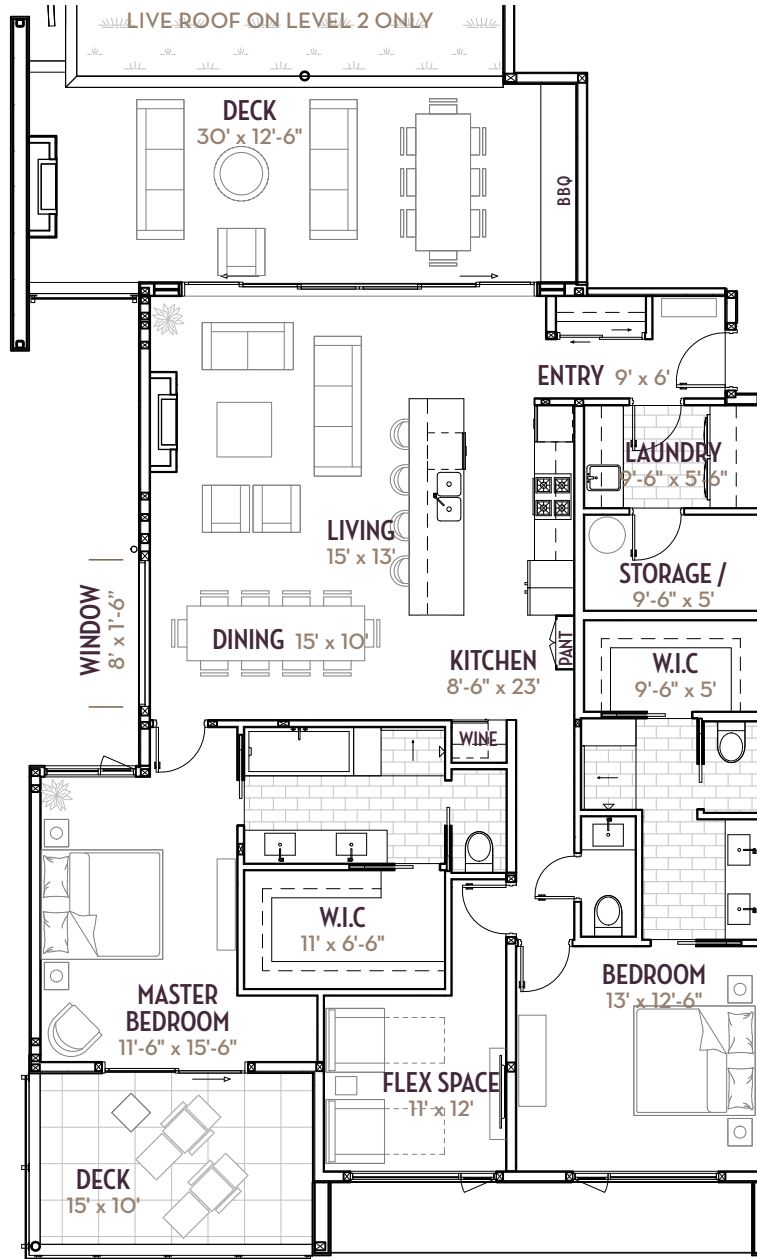
ARIVA PREMIUM ESTATE LIVING

# SUITE D (WEST)

2 bedroom *plus flex space* | 2.5 bath  
2215 sq. ft. | 1732 sq. ft. *plus* 483 sq. ft. outdoor room



PHASE 2



A one-of-a-kind Okanagan community created by **ARIVA RESORTS**

Designed by **m+m a**  
the award winning architectural firm: **MEIKLEJOHN ARCHITECTS INC.**

Working Together, **TEAM CONSTRUCTION** Management Limited  
Working Together.

**ArivaKelowna.ca**

\*Dimensions, layouts and specifications are approximates only and subject to change without notice. All drawings and renderings are artist's conceptions only and for illustrative purposes only. E. & O.E.



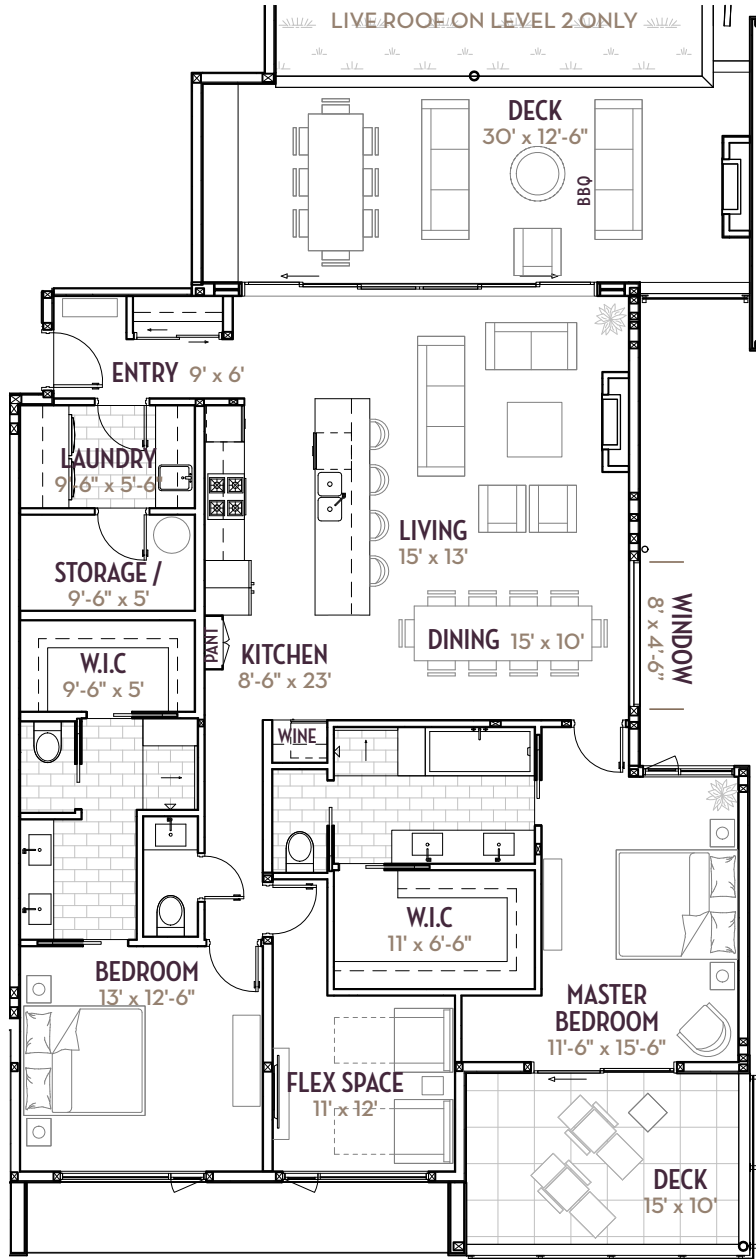
ARIVA PREMIUM ESTATE LIVING

# SUITE D (EAST)

2 bedroom *plus* flex space | 2.5 bath  
2215 sq. ft. | 1732 sq. ft. *plus* 483 sq. ft. outdoor room



PHASE 2





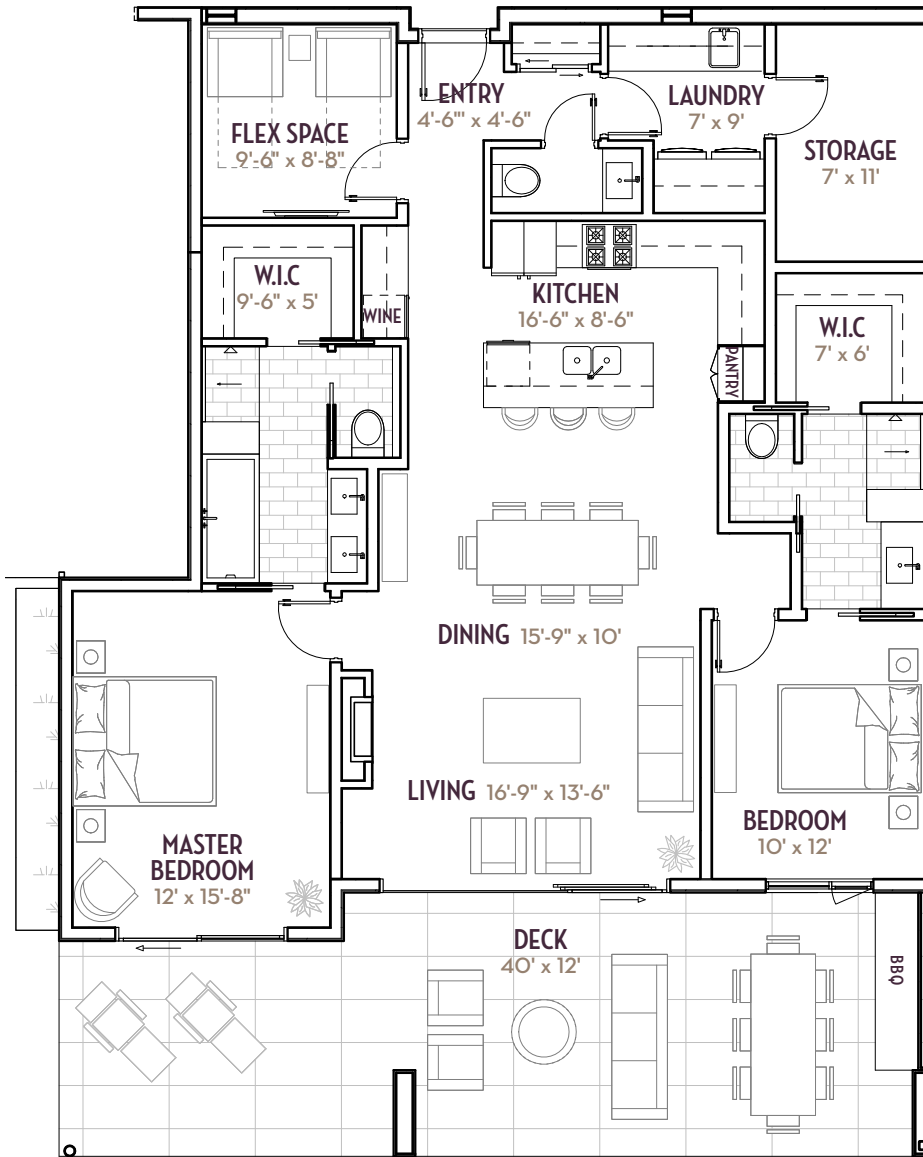
ARIVA PREMIUM ESTATE LIVING

# SUITE D1 (WEST)

2 bedroom *plus* flex space | 2.5 bath  
1978 sq. ft. | 1510 sq. ft. *plus* 468 sq. ft. outdoor room



PHASE 2



A one-of-a-kind Okanagan community created by **ARIVA RESORTS**

Designed by **m+m a**  
the award winning architectural firm: **MEIKLEJOHN ARCHITECTS INC.**

Working Together, Winning Together. **TEAM CONSTRUCTION MANAGEMENT LIMITED**

**ArivaKelowna.ca**

\*Dimensions, layouts and specifications are approximates only and subject to change without notice. All drawings and renderings are artist's conceptions only and for illustrative purposes only. E. & O.E.



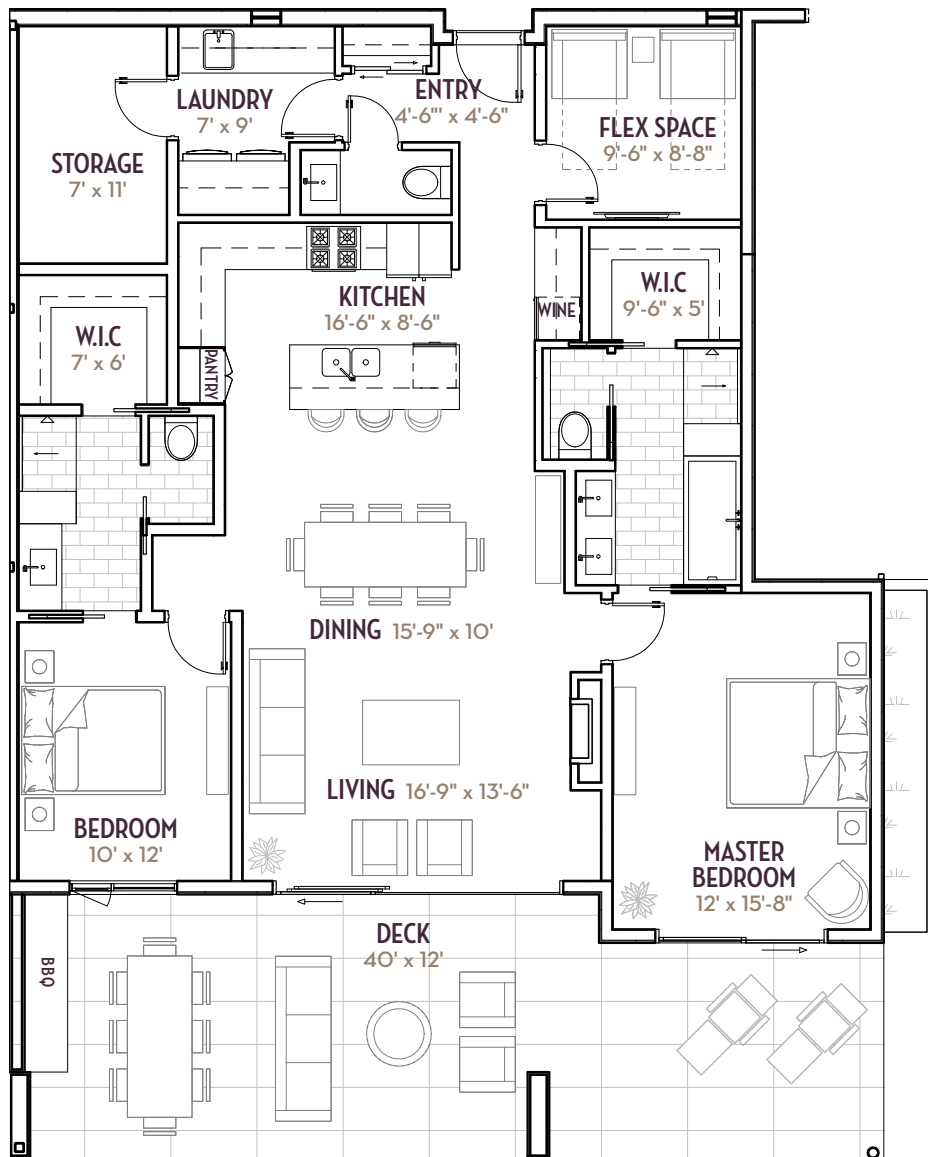
ARIVA PREMIUM ESTATE LIVING

# SUITE D1 (EAST)

2 bedroom *plus* flex space | 2.5 bath  
1978 sq. ft. | 1510 sq. ft. *plus* 468 sq. ft. outdoor room



PHASE 2



A one-of-a-kind Okanagan community created by **ARIVA RESORTS**

Designed by **m+m a**  
the award winning architectural firm: **MEIKLEJOHN ARCHITECTS INC.**

Working Together, Winning Together. **TEAM CONSTRUCTION**  
MANAGEMENT LIMITED

**ArivaKelowna.ca**

\*Dimensions, layouts and specifications are approximates only and subject to change without notice. All drawings and renderings are artist's conceptions only and for illustrative purposes only. E. & O.E.



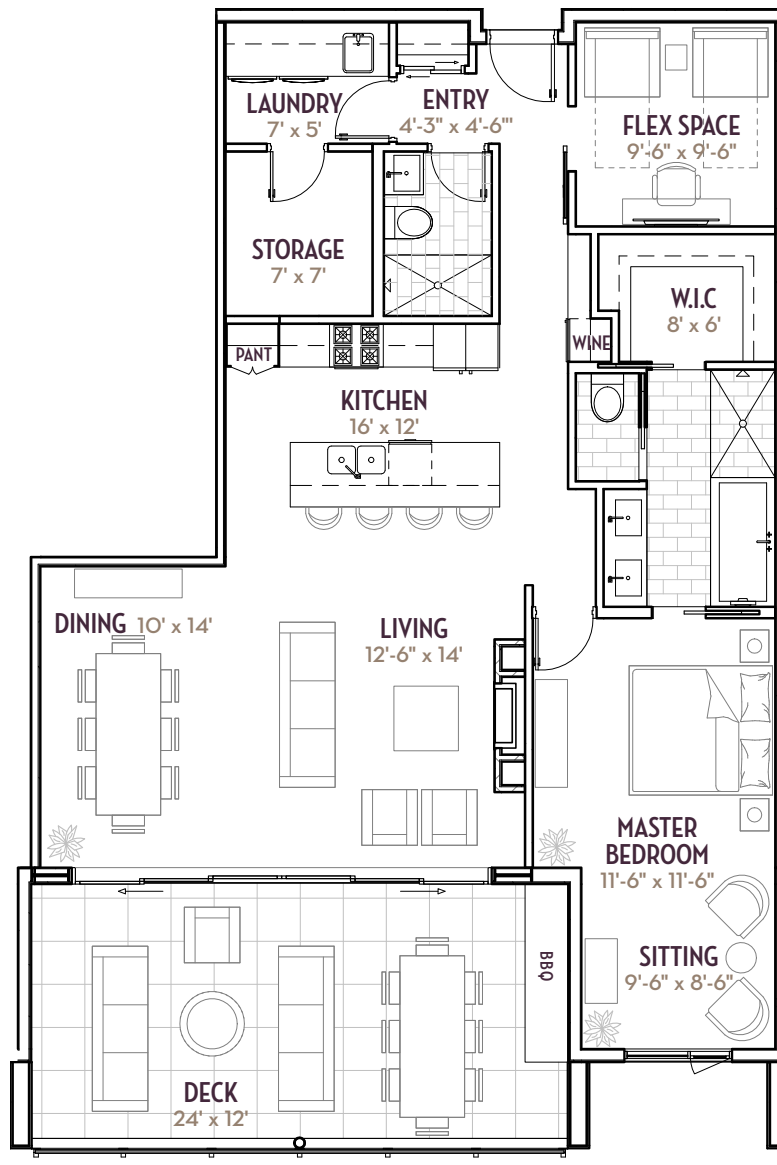
ARIVA PREMIUM ESTATE LIVING

# SUITE E (WEST)

1 bedroom *plus* flex space | 2 bath  
1570 sq. ft. | 1271 sq. ft. *plus* 299 sq. ft. outdoor room



PHASE 2



A one-of-a-kind  
Okanagan community  
created by: **ARIVA  
RESORTS**

Designed by **m+m a**  
the award winning  
architectural firm: **MEIKLEJOHN ARCHITECTS INC.**

Working Together,  
Winning Together. **TEAM CONSTRUCTION**  
MANAGEMENT LIMITED

**ArivaKelowna.ca**

\*Dimensions, layouts and specifications are approximates only and subject to change without notice.  
All drawings and renderings are artist's conceptions only and for illustrative purposes only. E. & O.E.



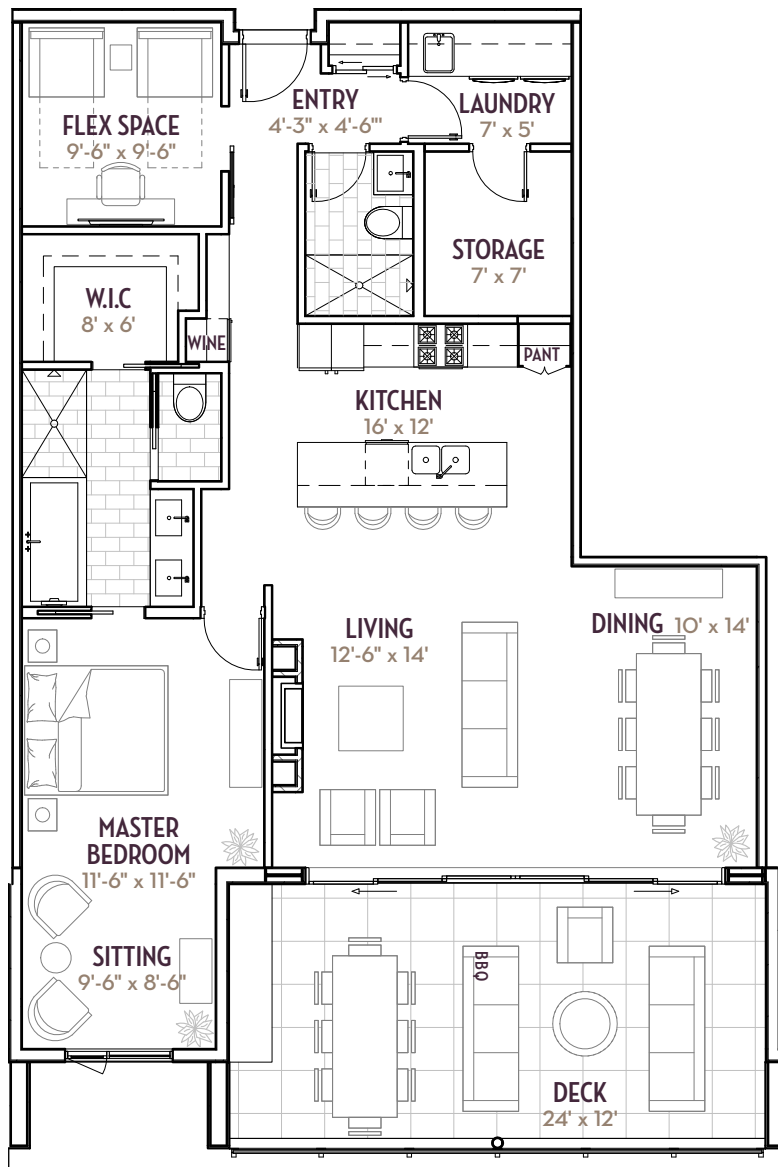
ARIVA PREMIUM ESTATE LIVING

# SUITE E (EAST)

1 bedroom *plus* flex space | 2 bath  
1570 sq. ft. | 1271 sq. ft. *plus* 299 sq. ft. outdoor room



PHASE 2



A one-of-a-kind  
Okanagan community  
created by: **ARIVA  
RESORTS**

Designed by **m+m a**  
the award winning  
architectural firm: **MEIKLEJOHN ARCHITECTS INC.**

Working Together,  
Winning Together.

**TEAM CONSTRUCTION**  
MANAGEMENT LIMITED

**ArivaKelowna.ca**

\*Dimensions, layouts and specifications are approximates only and subject to change without notice.  
All drawings and renderings are artist's conceptions only and for illustrative purposes only. E. & O.E.





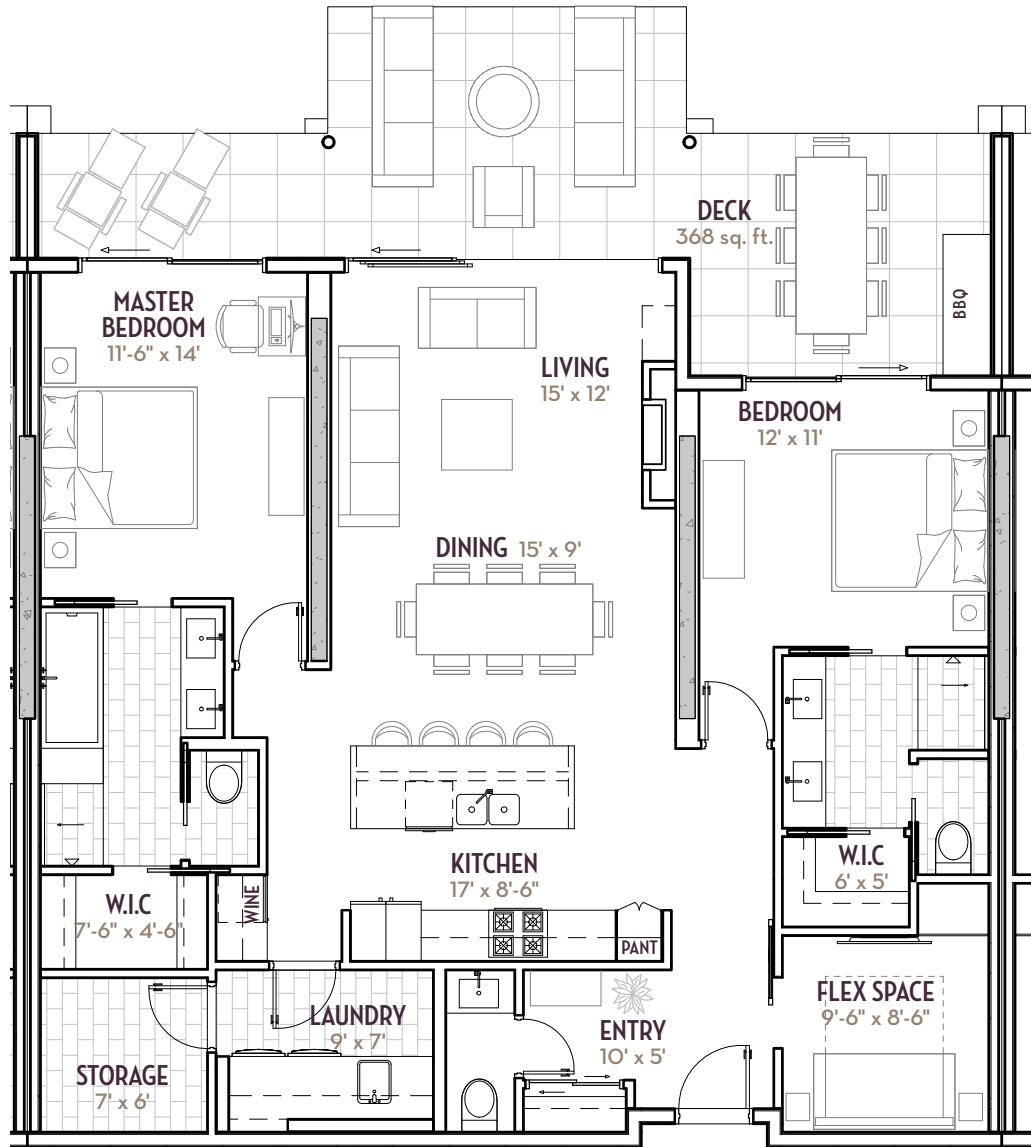
ARIVA PREMIUM ESTATE LIVING

# SUITE G

2 bedroom *plus* flex space | 2.5 bath  
1861 sq. ft. | 1445 sq. ft. *plus* 416 sq. ft. outdoor room



PHASE 2





ARIVA PREMIUM ESTATE LIVING

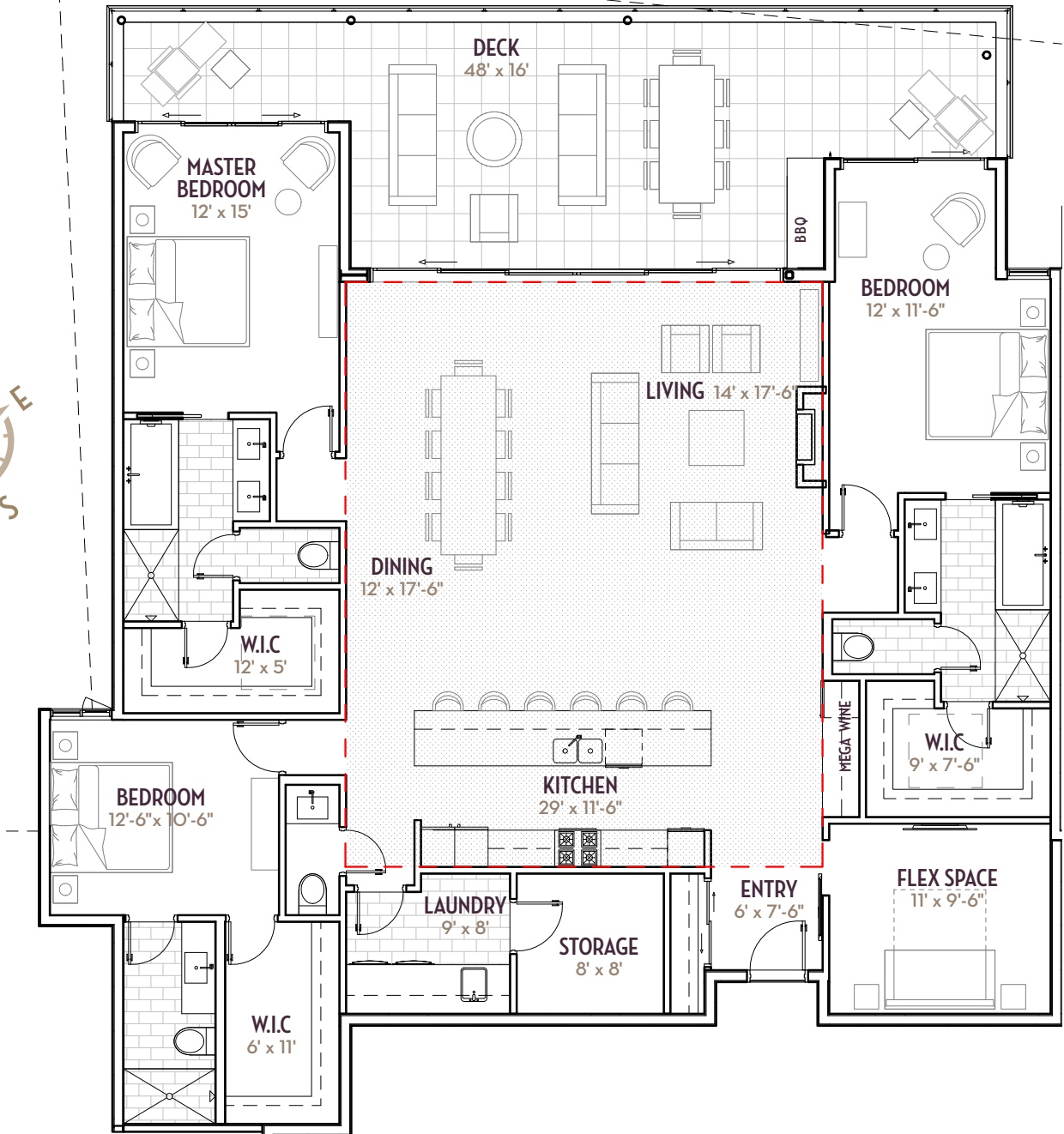
# PENTHOUSE 1A

3 bedroom | 3.5 bath

2894 sq. ft. | 2319 sq. ft. plus 575 sq. ft. deck area



PHASE 2



A one-of-a-kind Okanagan community created by **ARIVA RESORTS**

Designed by **m+m a**  
the award winning architectural firm: **MEKLEJOHN ARCHITECTS INC.**

Working Together, **TEAM CONSTRUCTION** Management Limited  
Winning Together.

**ArivaKelowna.ca**

\*Dimensions, layouts and specifications are approximates only and subject to change without notice. All drawings and renderings are artist's conceptions only and for illustrative purposes only. E. & O.E.



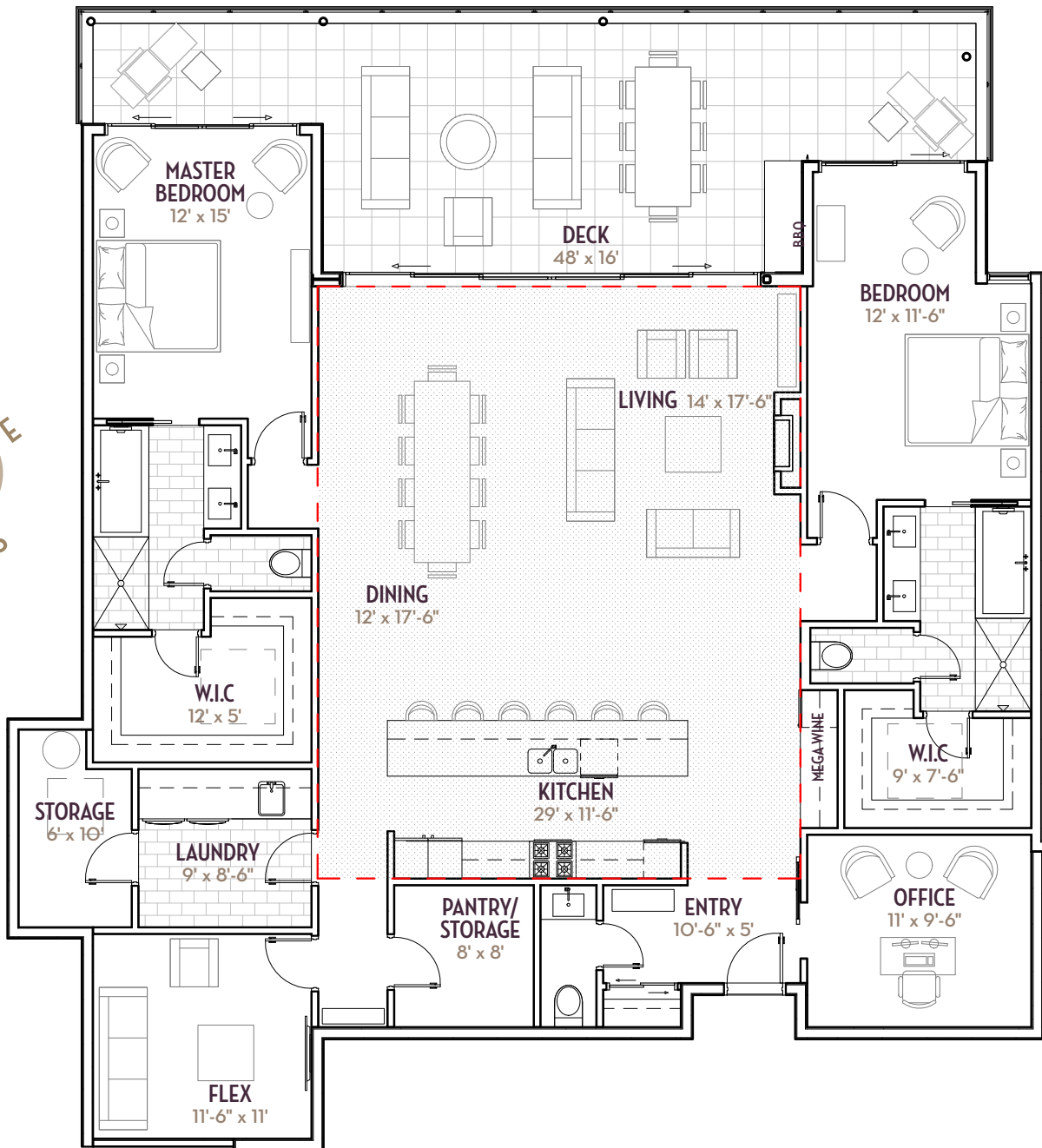
ARIVA PREMIUM ESTATE LIVING

# PENTHOUSE 1B

2 bedroom *plus flex space* | 2.5 bath  
2894 sq. ft. | 2319 sq. ft. *plus* 575 sq. ft. deck area



PHASE 2



A one-of-a-kind Okanagan community created by **ARIVA RESORTS**

Designed by **m+m a**  
the award winning architectural firm: **MEIKLEJOHN ARCHITECTS INC.**

Working Together,  
Winning Together.

**TEAM CONSTRUCTION**  
MANAGEMENT LIMITED

**ArivaKelowna.ca**

\*Dimensions, layouts and specifications are approximates only and subject to change without notice. All drawings and renderings are artist's conceptions only and for illustrative purposes only. E. & O.E.



ARIVA PREMIUM ESTATE LIVING

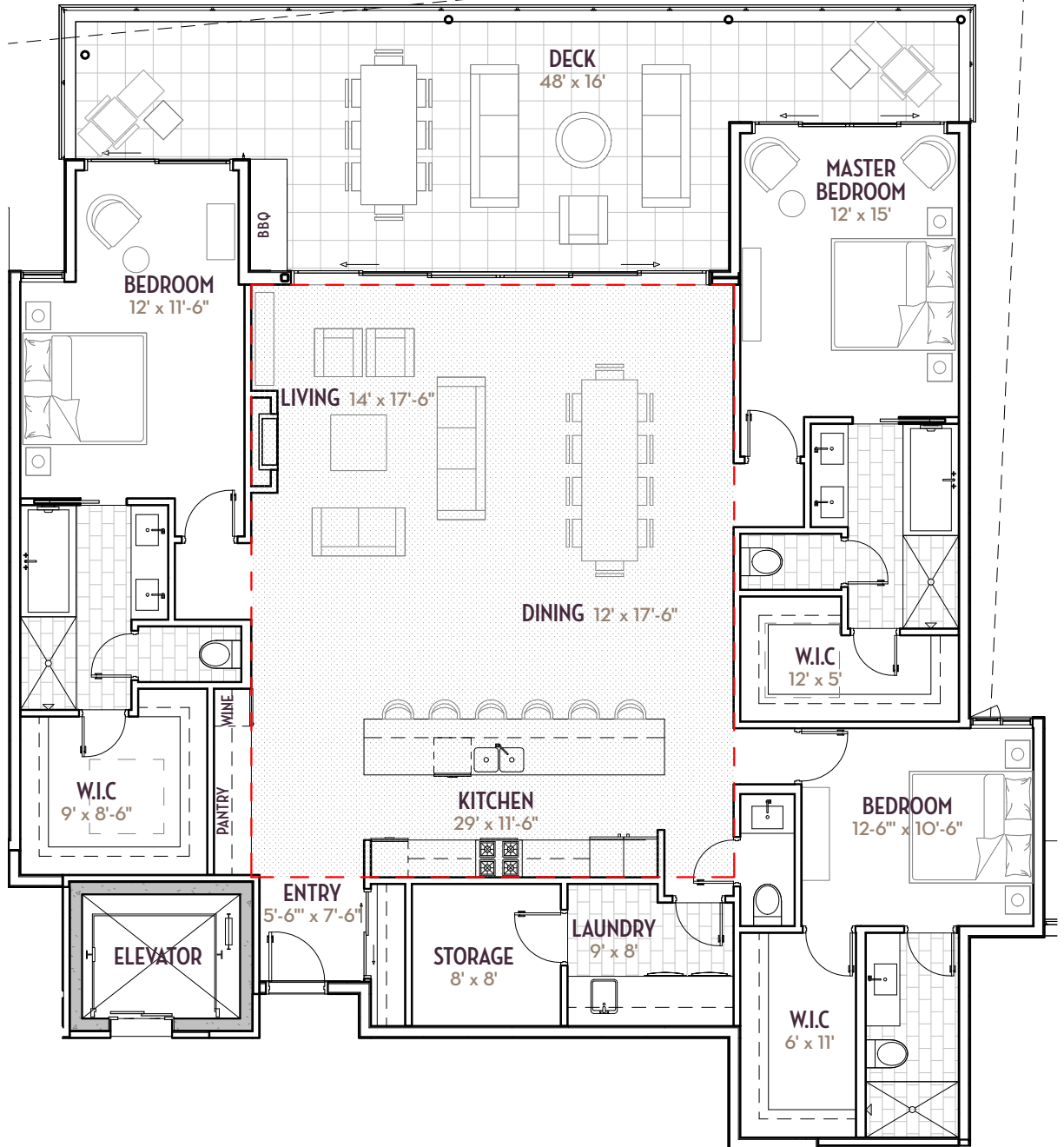
# PENTHOUSE 2A

3 bedroom | 3.5 bath

2766 sq. ft. | 2191 sq. ft. *plus* 575 sq. ft. deck area



PHASE 2



A one-of-a-kind Okanagan community created by **ARIVA RESORTS**

Designed by **m+m a** the award winning architectural firm: **MEIKLEJOHN ARCHITECTS INC.**

Working Together, Winning Together. **TEAM CONSTRUCTION MANAGEMENT LIMITED**

**ArivaKelowna.ca**

\*Dimensions, layouts and specifications are approximates only and subject to change without notice. All drawings and renderings are artist's conceptions only and for illustrative purposes only. E. & O.E.



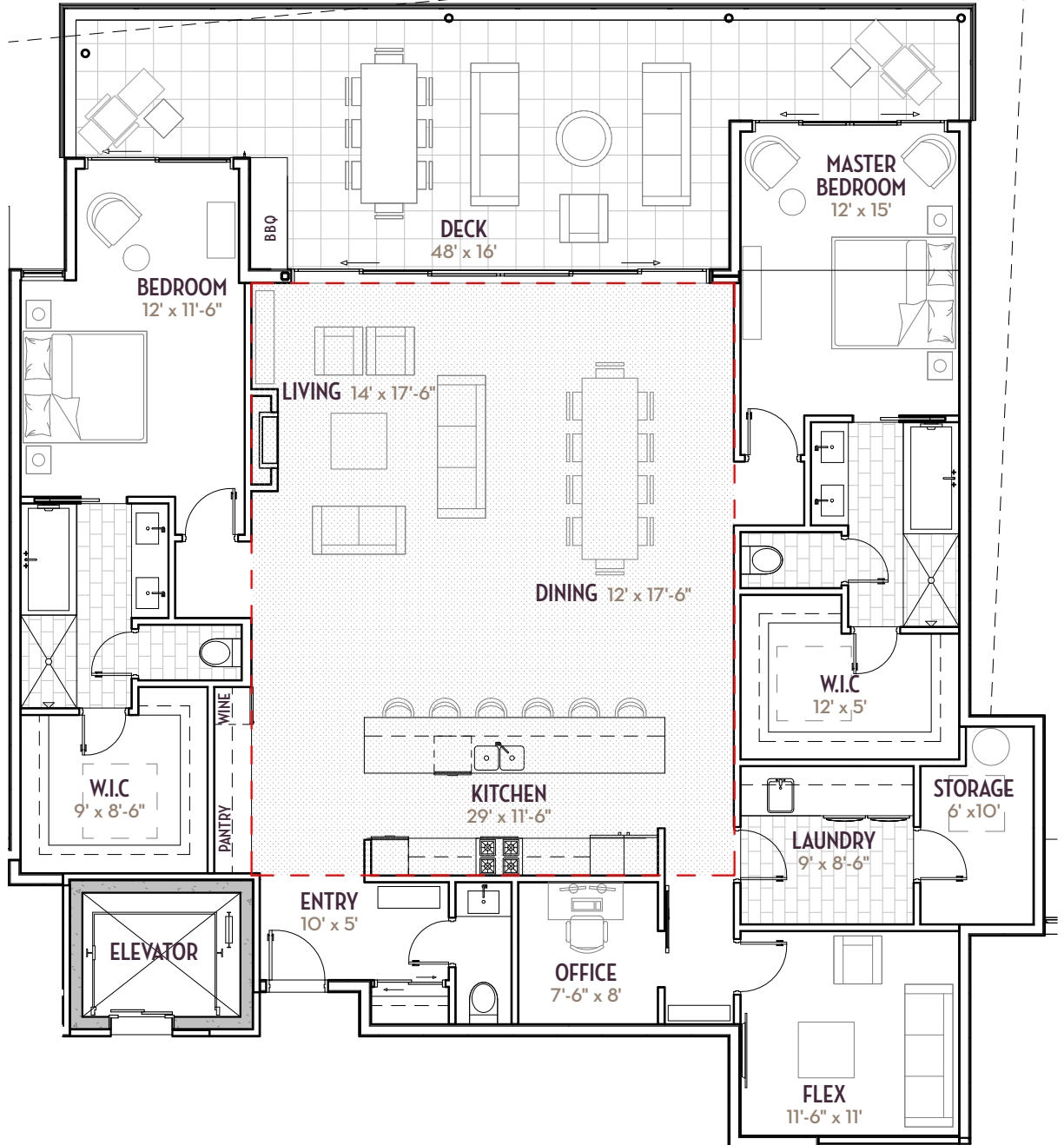
ARIVA PREMIUM ESTATE LIVING

# PENTHOUSE 2B

2 bedroom *plus* flex space | 2.5 bath  
2796 sq. ft. | 2221 sq. ft. *plus* 575 sq. ft. deck area



PHASE 2



A one-of-a-kind Okanagan community created by **ARIVA RESORTS**

Designed by **m+m a** the award winning architectural firm: **MEIKLEJOHN ARCHITECTS INC.**

Working Together, Winning Together. **TEAM CONSTRUCTION MANAGEMENT LIMITED**

**ArivaKelowna.ca**

\*Dimensions, layouts and specifications are approximates only and subject to change without notice. All drawings and renderings are artist's conceptions only and for illustrative purposes only. E. & O.E.



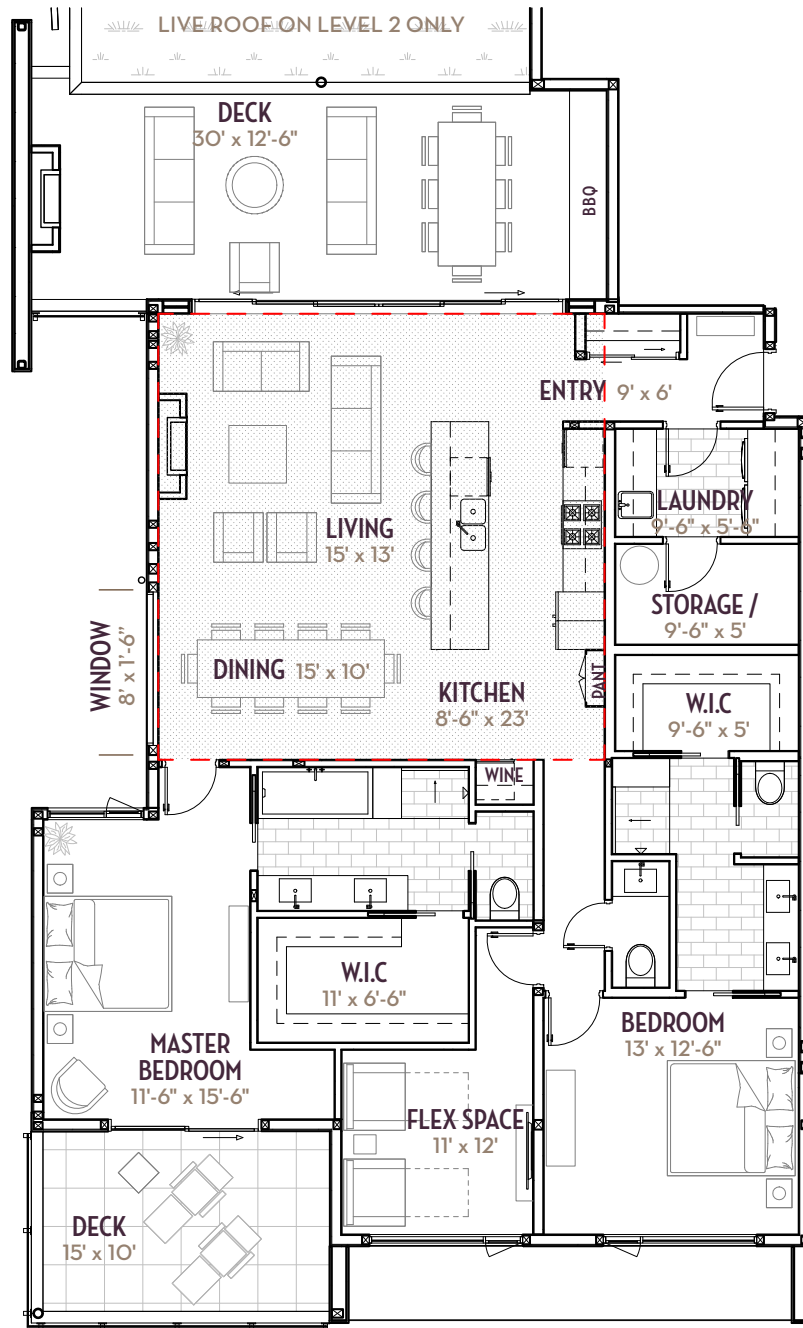
ARIVA PREMIUM ESTATE LIVING

# PENTHOUSE 3

2 bedroom *plus flex space* | 2.5 bath  
2215 sq. ft. | 1732 sq. ft. *plus* 483 sq. ft. outdoor room



PHASE 2



A one-of-a-kind Okanagan community created by **ARIVA RESORTS**

Designed by **m+m a**  
the award winning architectural firm: **MEIKLEJOHN ARCHITECTS INC.**

Working Together, **TEAM CONSTRUCTION**  
Working Together. **MANAGEMENT LIMITED**

**ArivaKelowna.ca**

\*Dimensions, layouts and specifications are approximates only and subject to change without notice. All drawings and renderings are artist's conceptions only and for illustrative purposes only. E. & O.E.



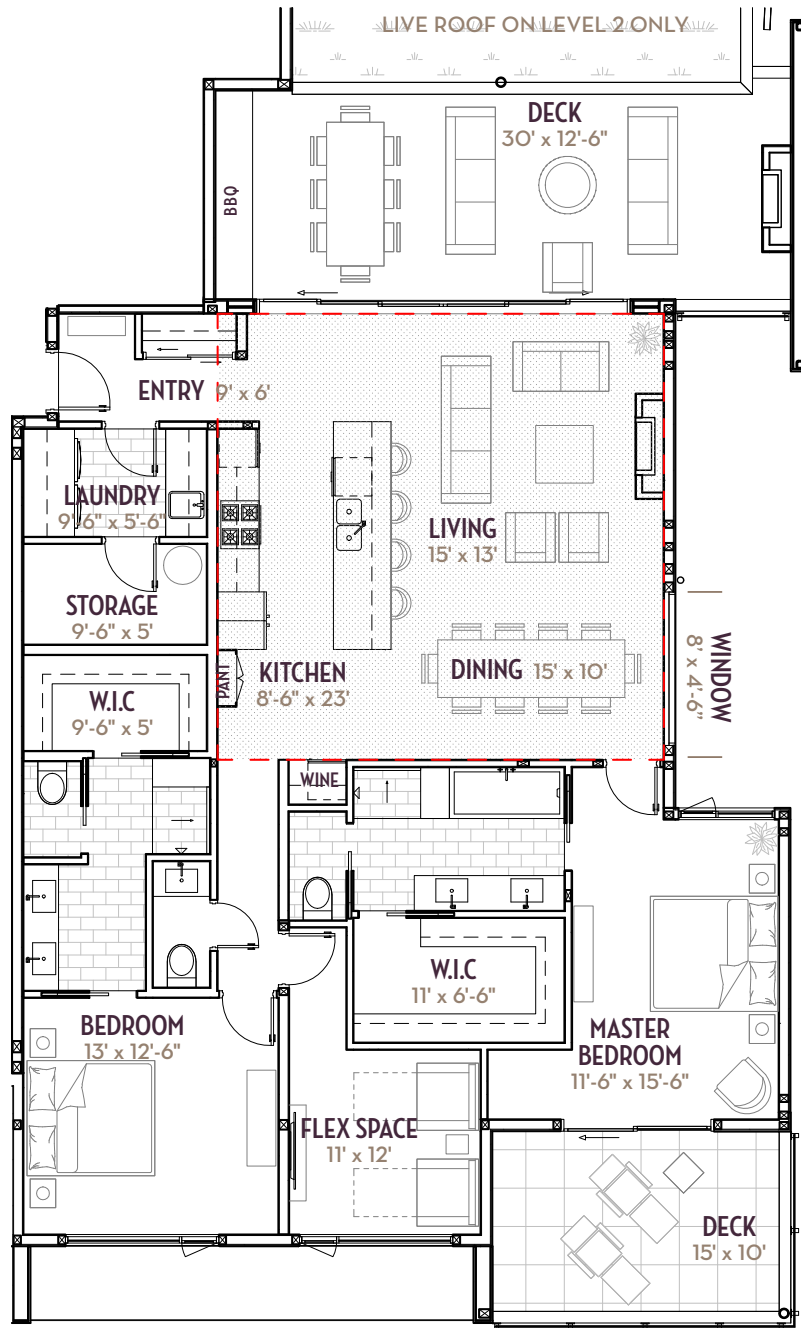
ARIVA PREMIUM ESTATE LIVING

# PENTHOUSE 4

2 bedroom *plus flex space* | 2.5 bath  
2215 sq. ft. | 1732 sq. ft. *plus* 483 sq. ft. outdoor room



PHASE 2



A one-of-a-kind Okanagan community created by **ARIVA RESORTS**

Designed by **m+m a** the award winning architectural firm: **MEIKLEJOHN ARCHITECTS INC.**

Working Together, **TEAM CONSTRUCTION** Management Limited

**ArivaKelowna.ca**

\*Dimensions, layouts and specifications are approximates only and subject to change without notice. All drawings and renderings are artist's conceptions only and for illustrative purposes only. E. & O.E.